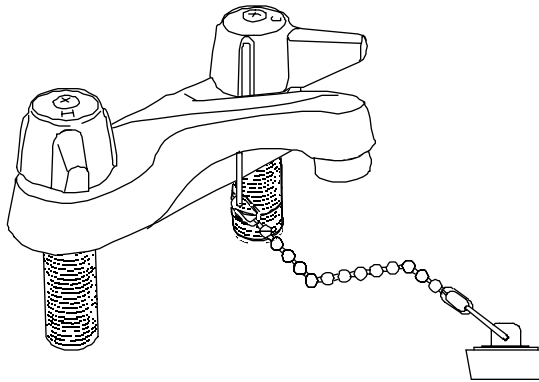


# Central Brass

## Centerset Faucet

4-Inch Centers  
Cast Brass Body  
Chain & Stopper



## Installation Instruction 1138 - Series



Faucets with lever, wrist or elbow handles and compression or ceramic stem cartridges are ADA compliant.



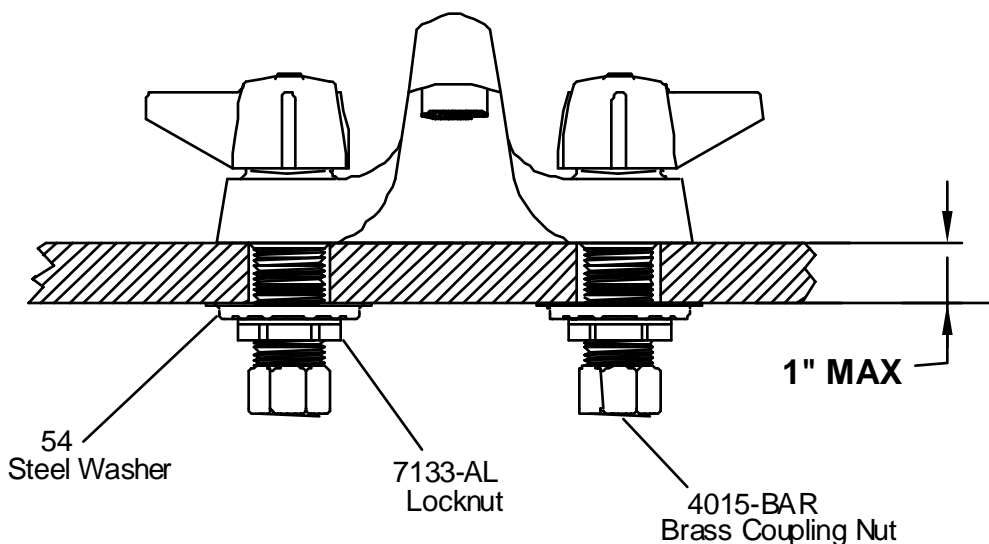
Certified To  
ANSI/NSF 61/Section 9

# Central Brass

Manufacturing Company

2950 East 55th Street Cleveland, Ohio 44127 (216-883-0220)

# Installation Guide for Centerset Faucet

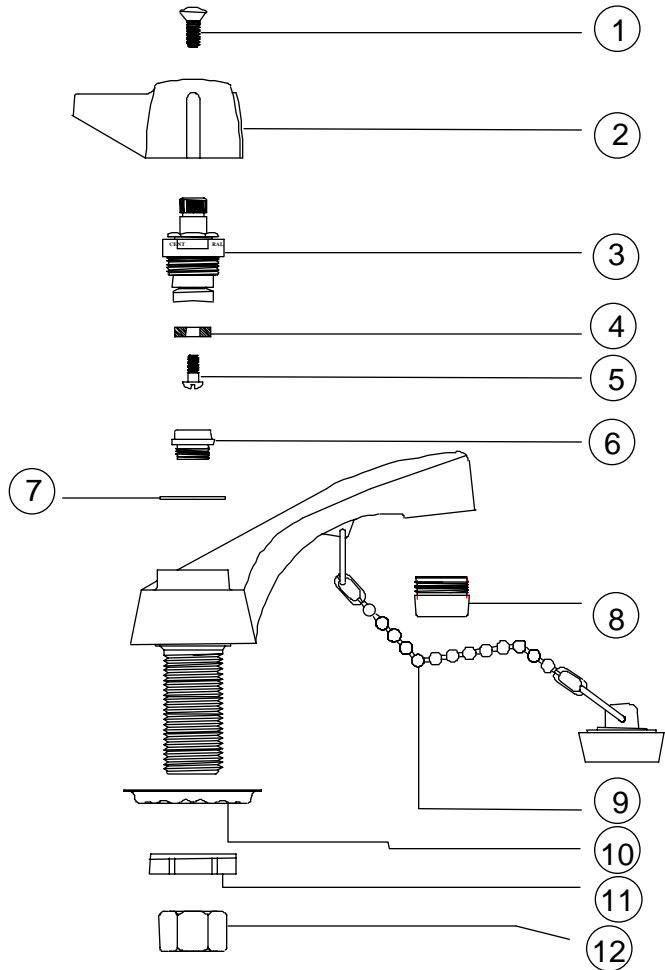


## GUIDE FOR INSTALLING CENTERSET

1. Apply a layer of soft putty (plumbers set) to underside of faucet body. Insert threaded faucet shanks down through holes in lavatory.
2. From underside assemble steel washer (54) and locknut (7133-AL) on each shank and tighten securely.
3. Connect faucet to water supply lines as indicated by hot and cold handles. Brass coupling nuts (4015-BAR) are provided.
4. Turn on supply lines. Check all connections for leakage.
5. Turn on hot and cold water for one minute to flush out dirt and sediment that might have accumulated during installation.
6. Install aerator onto end of spout.

**NOTE For Compression Stems only:** If faucet stem packing should leak under handle of the faucet the leak may be stopped by removing the handle and tightening the packing nut with a 5/8" wrench in 1/8 to 1/4 turn increments.

**1138 Series  
CENTERSET  
PARTS  
BREAKDOWN**



Part #	Description
1	107-F Handle Screw
2	523-C or H Handle (C-Cold)(H-Hot)
3	SU-353-ER or EL Stem Assembly (ER-Cold) or (EL-Hot)
4	901-WN Seat Washer
5	104 Seat Washer Screw
6	263-BC Replaceable Seat
7	1028-Y Bonnet Gasket
9	30-L Aerator
9	G-192-UB Chain & Stopper with Ring (1138 Series only)
10	54 Steel Washer
11	7133-AL Locknut
12	4015-BAR Coupling Nut

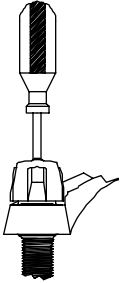
# REPLACEMENT PARTS FOR 1138 SERIES

PART NUMBER	DESCRIPTION
30-L	AERATOR MALE 13/16-27UNS THRD
G-192-UB	CHAIN & STOPPER W/RING CENTERSETS
G-353-EL	STEM ASSEMBLY STANDARD COLD
G-353-ER	STEM ASSEMBLY STANDARD HOT
G-523-C	HANDLE METAL LEVER W/SCR C 1/PK
G-523-H	HANDLE METAL LEVER W/SCR H 1/PK
G-913-A	COUPLING NUTS & WASHERS
G-95-A	COUPLING NUT & WASHER
K-1-C	KIT REPAIR COMP/STEM SINK C
K-1-H	KIT REPAIR COMP/STEM SINK H
X1028-Y	GASKET NYLON 25/PK
X104	SCREW MACHINE RD HD BRASS 25/PK
X107-F	SCREW MACHINE OVAL HD PHIL 25/PK
X193-B	WASHER BRASS 6/PK
X263-BC	SEAT BRONZE #314 ALLOY 10/PK
X353-CW	PACKING RUBBER MOLDED 10/PK
X353-DH	NUT PACKING HEX BRASS 10/PK
X4015	NUT BRASS HEX COUPLING 4/PK
X54	WASHER STEEL CROWFOOT 10/PK
X70-WA	BUTTON BRASS HOLE PLUG 6/PK
X7133-AL	LOCKNUT ALUM DIE CAST 10/PK
X901-WN	WASHER SEAT 25/PK

# CENTRAL MAINTENANCE INSTRUCTIONS

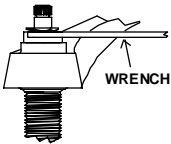
## DISASSEMBLY

### 1 REMOVE HANDLE



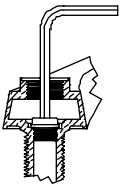
1. Turn off water supply.
2. Remove screw.
3. Remove handle.

### 2 REMOVE STEM ASSEMBLY



1. Use adjustable wrench.
2. Unscrew (counter-clockwise) remove stem unit.

### 3 REMOVE SEAT



1. Insert 5/16" allen wrench in seat.
2. Turn seat (counter-clockwise) to remove.

For compression stems only

## REPLACEMENT

### 4

### Use Only Central Replacement Parts

**K-1-C** Cold stem assembly with seat

**K-1-H** Hot stem assembly with seat

**G-353-ER** Hot stem assembly

**G-353-EL** Cold stem assembly



Nylon  
Gasket

Replace components in reverse  
order of disassembly