

Central Brass

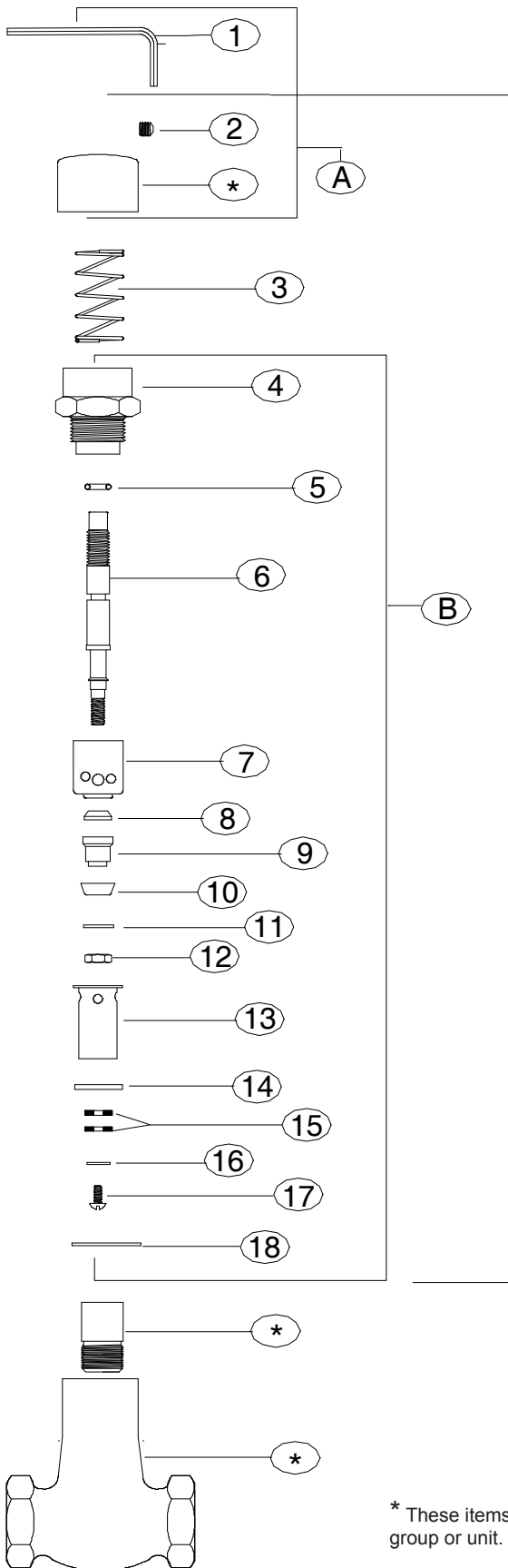
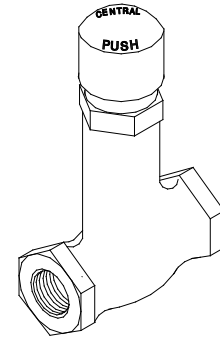
COMPANY

Brecksville, Ohio 44141

Phone: (216) 883-0220 Fax: (440) 526-5745

www.CentralBrass.com

MODEL NO. **0336** Series
Slow-Closing Straight Stop



REPLACEMENT PARTS

#	Part #	Description
A	K-170-AP	Slow-Close Cap Plain not indexed with Set Screw (X103-HS) & Wrench (170-WA)
B	K-170	Slow-Close Stem Assembly
C	K-170-P	Slow-Close Stem Assembly including Cap Plain not indexed and Set Screw (X103-HS)
1	170-WA	$\frac{3}{32}$ Allen Wrench
2	X103-HS	Set Screw (6 pcs per pack)
3	170-L	Spring
4	XPF-170-B	Bonnet (2 pcs per pack)
5	X1038-CRN	O-Ring (25 pcs per pack)
6	XPF-170-C	Stem (2 pcs per pack)
7	X353-S	Sleeve (10 pcs per pack)
8	X170-F	Seat Washer (10 pcs per pack)
9	XPF-170-D	Seat Washer Holder (2 pcs per pack)
10	X170-CW	Cup Washer (10 pcs per pack)
11	X279-L	Brass Washer (10 pcs per pack)
12	XPF-170-N	Hex Nut (10 pcs per pack)
13	XPF-170-E	Brass Dashpot chrome plated (2 pcs per pack)
14	X170-P	Gasket (10 pcs per pack)
15	X170-J	Felt Washer (10 pcs per pack)
16	X170-H	Brass Dashpot Washer (10 pcs per pack)
17	X170-K	Screw (10 pcs per pack)
18	X1028-Y	Gasket (25 pcs per pack)

* These items are not offered individually and must be purchased as a group or unit. Please contact Central Brass for more information.