

# Central Brass

C O M P A N Y

Brecksville, Ohio 44141

Phone: (216) 883-0220 Fax: (440) 526-5745

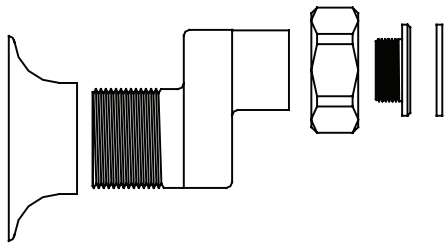
www.CentralBrass.com

**FLANGE OPTIONS**  
**0047, 0048, 0050, 0054**

## SU-2806

"S" Flange

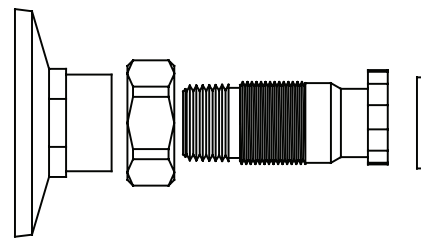
SU-2806: Adjustable from 6-1/2 to 9-1/2 inch centers  
1/2-14 NPS female inlet thread



## SU-2846

"T" Flange

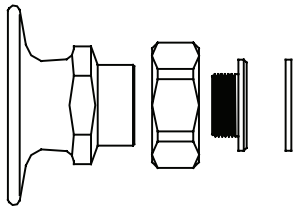
SU-2846: Adjustable from 7-7/8 to 8-1/8 inch centers  
1/2-14 NPT male inlet thread



## SU-2807

"U" Flange

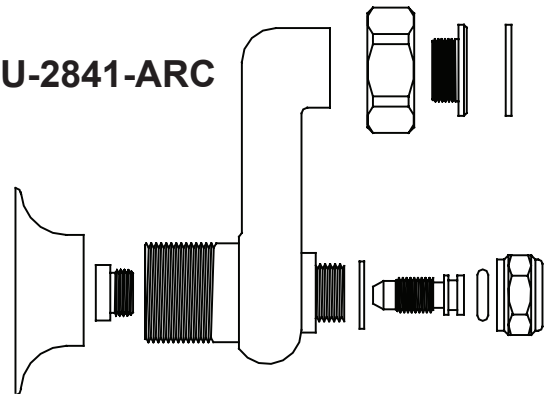
SU-2807: Adjustable from 7-7/8 to 8-1/8 inch centers  
with 1/2-14 NPSM female inlet thread



"YRC" Flange

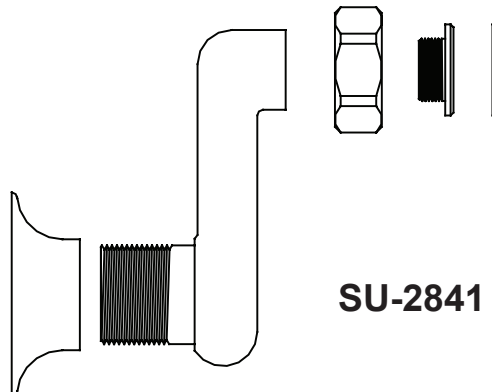
SU-2841-ARC: Adjustable from 3 to 13 inch centers  
with integral stops, 1/2-14 female inlet thread

## SU-2841-ARC



"R" Flange

SU-2841: Adjustable from 3 to 13 inch centers  
with 1/2-14 female inlet thread  
(Replacement Parts Only)



## SU-2841