

Central Brass

MANUFACTURING COMPANY

2950 East 55th St. Cleveland, Ohio 44127

Phone: (216) 883-0220 Fax: (216) 883-0875

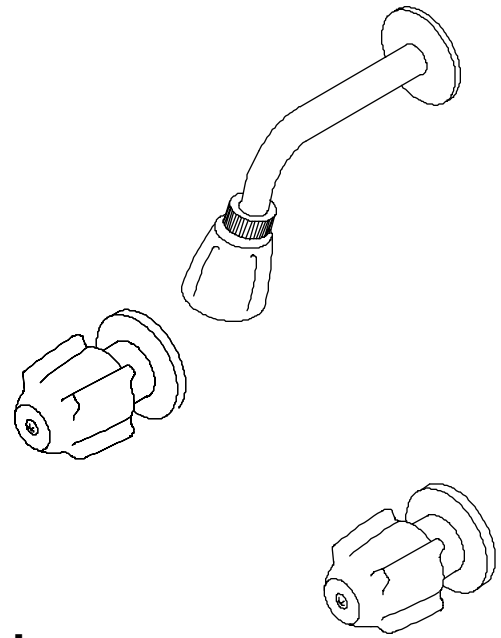
www.CentralBrass.com

MODEL NO. 0826
SHOWER FITTING

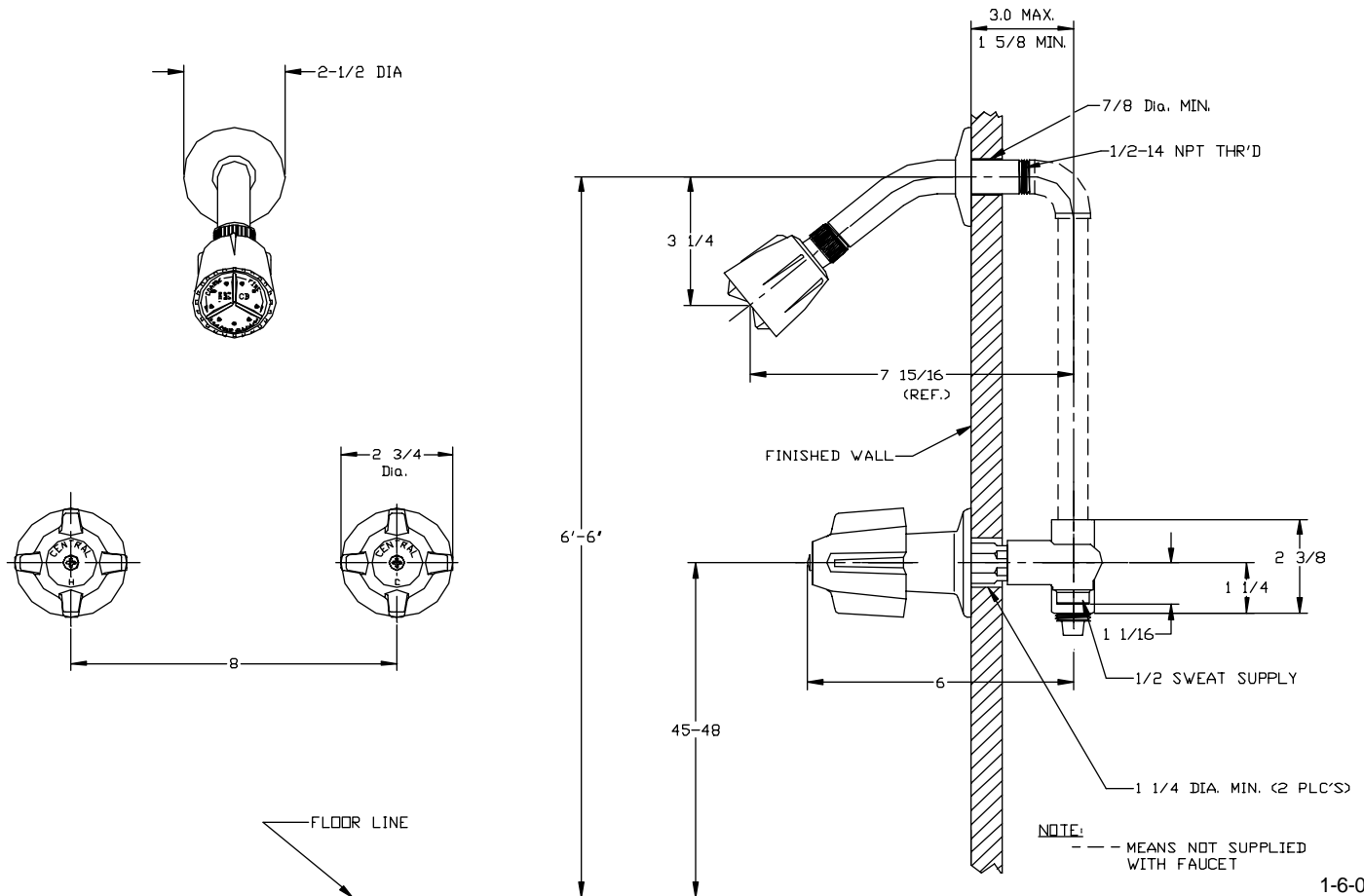
The two valve shower fitting is made with a cast brass body with replaceable seats designed for direct sweat connections. The stem units are all brass with a reinforced rubber packing and rubber seat washer. The stem units can be easily replaced from the front of the fitting without removing the valve body. The handles and escutcheons are zinc die cast with a chrome plated finish. The shower arm is brass with a chrome plated finish, the escutcheon is stainless steel, and the shower head is chrome plated plastic.

ASME A112.18.1M

Shower Flow Rate 2.5 gpm @ 80 psi



Installation Drawing



Central Brass

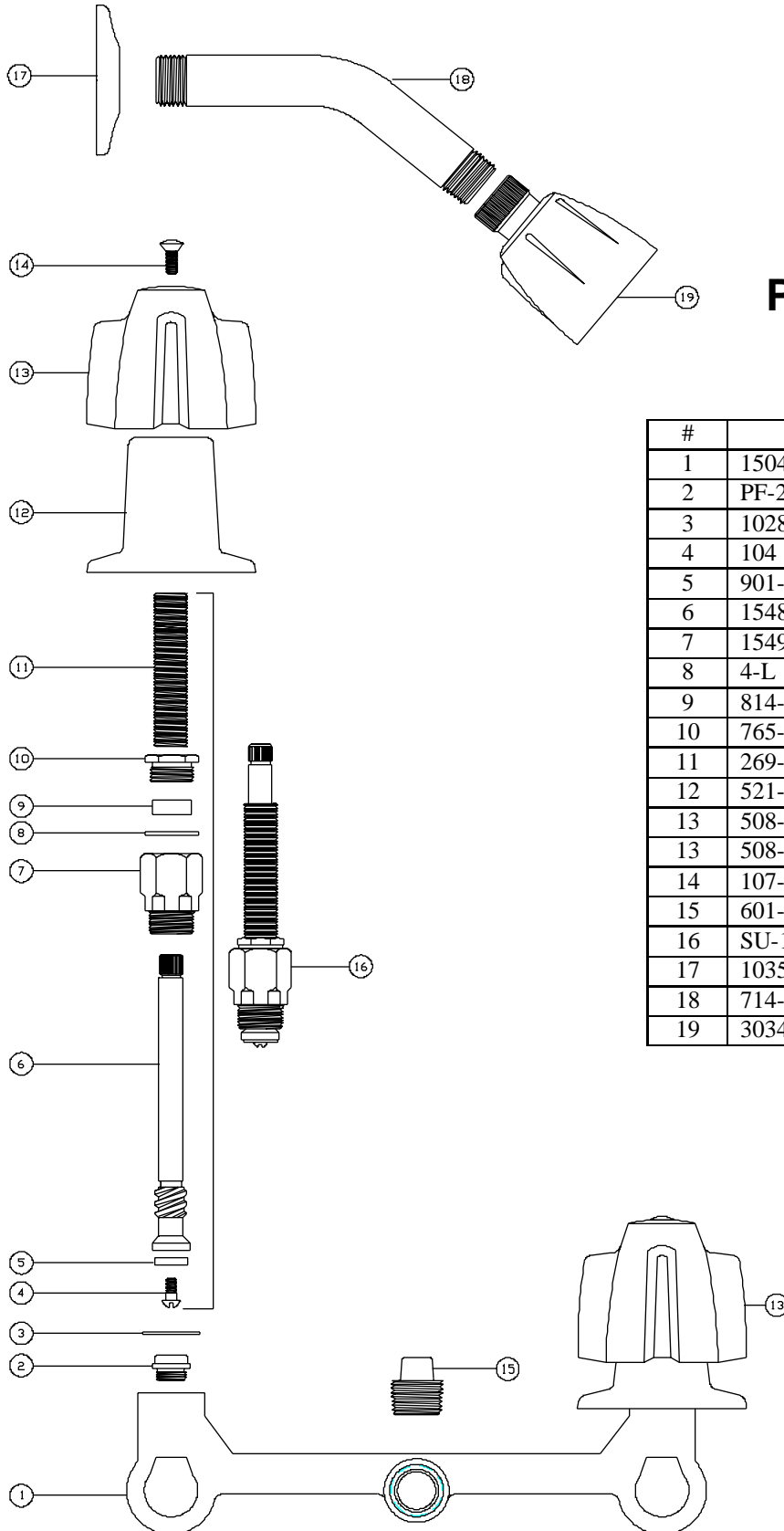
MANUFACTURING COMPANY

2950 East 55th St. Cleveland, Ohio 44127

Phone: (216) 883-0220 Fax: (216) 883-0875

www.CentralBrass.com

**MODEL NO. 0826
SHOWER FITTING**



Parts Breakdown

#	Part#	Description
1	1504-T	Brass 2-Valve Body
2	PF-263-B	Brass Seat
3	1028-Y	Nylon Gasket
4	104	Brass Seat Washer Screw
5	901-WN	Seat Washer
6	1548-CT	Right Thread Brass Stem
7	1549-CT	Right Thread Brass Bonnet
8	4-L	Brass Washer
9	814-BA	Packing
10	765-TA	Brass Packing Nut
11	269-2 9/16	Brass Threaded Nipple
12	521-B	Escutcheon
13	508-H	Handle Indexed "H"
13	508-C	Handle Indexed "C"
14	107-F	Brass Phillips Head Screw
15	601-P1/2B	Brass Plug
16	SU-1548-CTP	Right Thread Stem Assembly
17	1035-SS	Shower Arm Flange
18	714-WT-02	Brass Shower Arm
19	3034-1/2-02	Showerhead