

# Central Brass

C O M P A N Y

Brecksville, Ohio 44141

Phone: (216) 883-0220 Fax: (440) 526-5745

www.CentralBrass.com

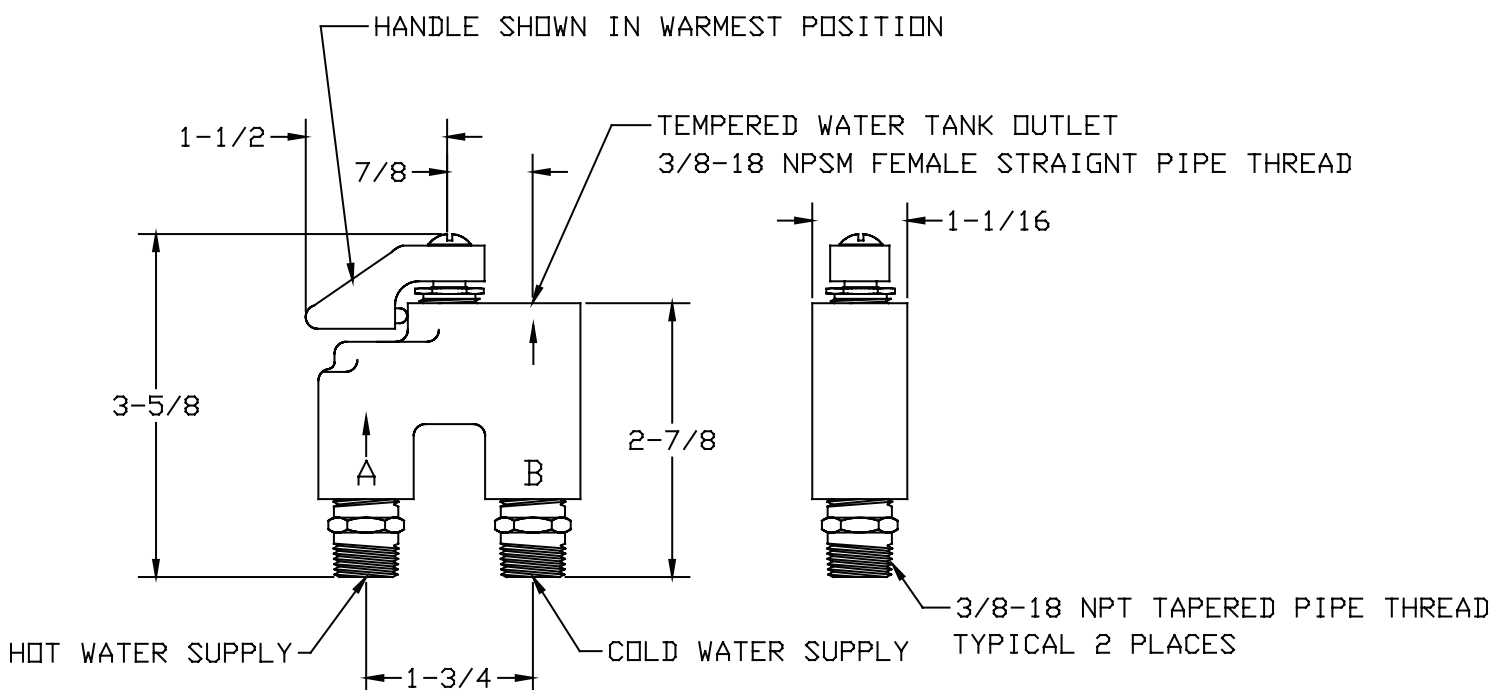
**MODEL NOS.**  
**0555 0555-RC**  
**ANTI-SWEAT**  
**TEMPERATOR VALVE**

## **0555**      **Rough Brass** **0555-RC**   **Rough Chrome**

The anti-sweat temperator valve has a cast brass body with two built in check valves to prevent cross flow between the hot and cold supply lines. The handle is detented in the selected positions that adjust the hot water flow rate. The largest hot water flow is obtained with the handle in a position parallel with the valve body. All of the metal component parts of the valve are brass. The check valve seats are rubber and the stem packing is a reinforced rubber. The temperator with a "RC" suffix has a rough chrome plated finish.



## Installation Drawing



# Central Brass

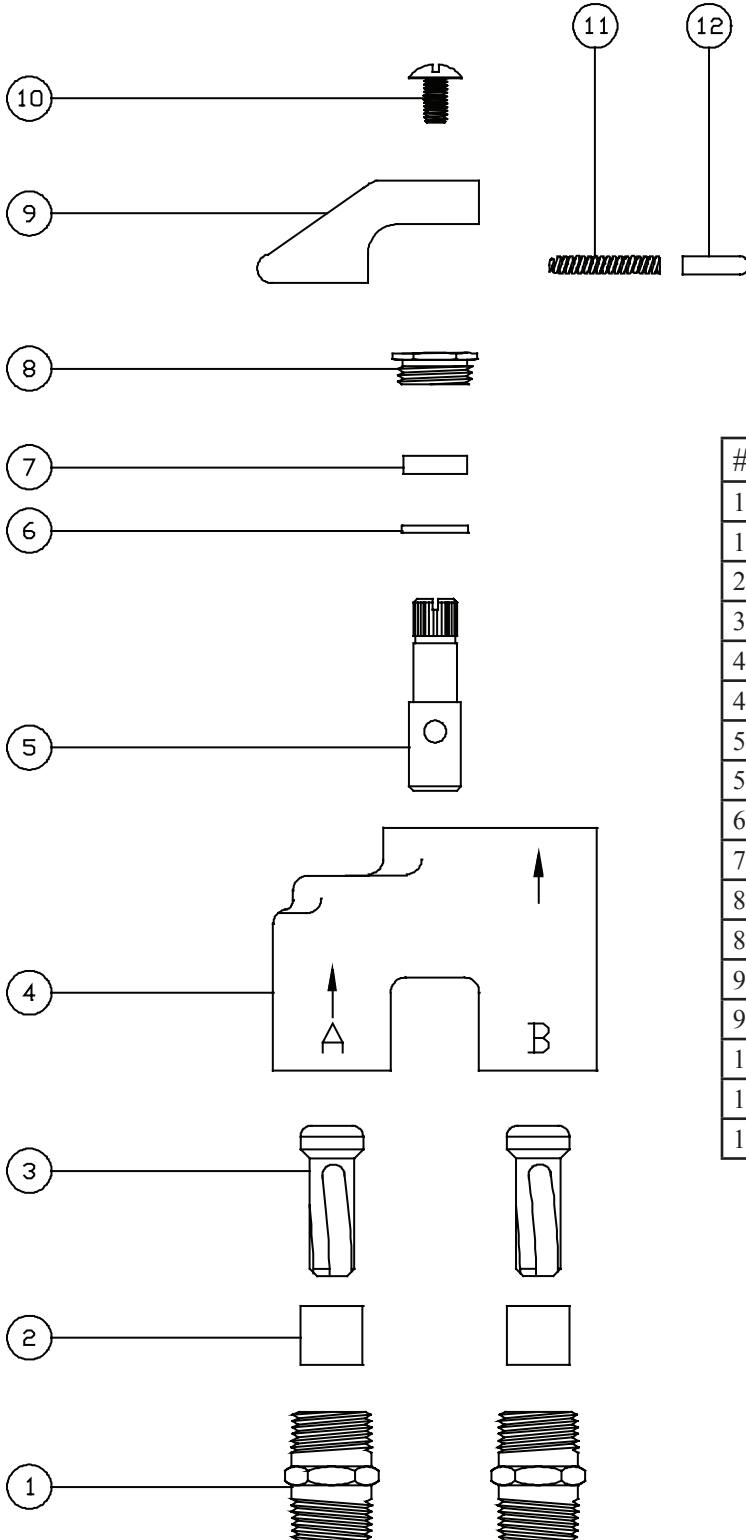
C O M P A N Y

Brecksville, Ohio 44141

Phone: (216) 883-0220 Fax: (440) 526-5745

www.CentralBrass.com

**MODEL NOS.**  
**0555 0555-RC**  
**ANTI-SWEAT**  
**TEMPERATOR VALVE**



## Parts Breakdown

#	Part #	Description
1	362-FR	Brass Nipple (0555 only)
1	PF-362-FR	Brass Nipple (0555-RC only)
2	362-R	Rubber Sleeve
3	5019-R	Brass Check Valve
4	5017	Brass Body (0555 only)
4	5017-RC	Brass Body (0555-RC only)
5	362-A	Brass Stem (0555 only)
5	PF-362-A	Brass Stem (0555-RC only)
6	82-J	Brass Washer
7	353-CW	Rubber Packing
8	353-DH	Brass Packing Nut (0555 only)
8	PF-353-DH	Brass Packing Nut (0555-RC only)
9	5018	Brass Handle (0555 only)
9	5018-RC	Brass Handle (0555-RC only)
10	107-S	Steel Screw
11	362-D	Music Wire Spring
12	362-E	Steel Pin

The parts listed in the parts breakdown above may not be offered separately as replacement parts. Please review the Replacement Parts page for the authorized replacement parts that are available for this item.