

# PRESSURE FITTINGS

## Flange / Plugs / Return Bend

**CELLO PRODUCTS INC**



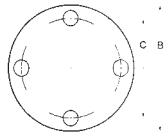
1-800-265-7882

### FLANGES - 150 LB BLIND

Companion with A.S.M.E. Drilling

Copper to Flange

Cast CP41-BLIND-



C x Flange

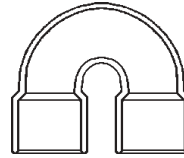
Mueller: -- wrot  
-- cast  
Elkhart: -- wrot  
-- cast  
Nibco: -- wrot  
-- cast

Item No.	Nom. Size (in inches)	Mstr Crtn	Net Wt. Approx.	Bolt Hole Dia	No. Bolt Holts	Dim A	Dim B	Dim C
CP41BLIND-08	1/2	1	--	5/8	4	5/16	3-1/2	2-3/8
CP41BLIND-12	3/4	1	1.23	5/8	4	11/32	3-7/8	2-3/4
CP41BLIND-16	1	1	1.79	5/8	4	3/8	4-1/4	3-1/8
CP41BLIND-20	1-1/4	1	2.02	5/8	4	13/32	4-5/8	3-1/2
CP41BLIND-24	1-1/2	1	3.42	5/8	4	7/16	5	3-7/8
CP41BLIND-32	2	1	4.22	3/4	4	1/2	6	4-3/4
CP41BLIND-40	2-1/2	1	6.64	3/4	4	9/16	7	5-1/2
CP41BLIND-48	3	1	8.21	3/4	4	5/8	7-1/2	6
CP41BLIND-64	4	1	13.25	3/4	8	11/16	9	7-1/2
CP41BLIND-80	5	1	17.00	7/8	8	3/4	10	8-1/2
CP41BLIND-96	6	1	--	7/8	8	13/16	11	9-1/2
CP41BLIND-99	8	1	--	7/8	8	15/16	13-1/2	11-3/4

### RETURN BEND (CLOSED)

Copper x Copper

Cast CP39-



C x C

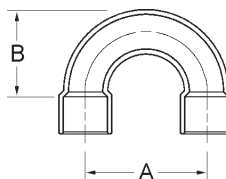
Mueller: -- wrot  
E-212 cast  
Elkhart: -- wrot  
-- cast  
Nibco: -- wrot  
739 cast

Item No.	Nom. Size (in inches)	Box Qty	Mstr Crtn	Net Wt. Approx.
CP39-08	1/2 x 1	25	100	.21
CP39-12	3/4 x 1-3/8	25	100	.29
CP39-16	1 x 1-3/4	25	100	.54

### RETURN BEND

Copper x Copper

Cast Wrot CP38-WP38-



C x C

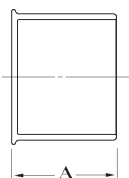
Mueller: WE-512 wrot  
-- cast  
Elkhart: 138 wrot  
-- cast  
Nibco: 638 wrot  
-- cast

Item No.	Nom. Size (in inches)	Box Qty	Mstr Crtn	Net Wt. Approx.	Dim A	Dim B
WP38-06-24	3/8 x 1-1/2	25	250	.06	1-1/2	1
WP38-08-1-12	1/2x1-1/2	25	250	.08	1-1/2	1-1/16
WP38-08-32	1/2 x 2	25	100	.13		
WP38-08-40	1/2 x 2-1/2	25	100	.13	2-1/2	1-9/19
WP38-08-48	1/2 x 3	25	250	.13	3	1-13/16
WP38-12-40	3/4 x 2 1/2	25	100	.20	2-1/2	1-11/16
WP38-16	1 x 3	5	50	.39	3	2-1/16
WP38-20	1-1/4 x 4	5	50	.70	4	2-11/16
CP38-20	1-1/4	--	--	1.27	4	2-11/16
WP38-24	1-1/2x4-3/8	5	40	.84	4-3/8	3
CP38-24	1-1/2	--	--	1.26	4-3/8	3
WP38-32	2 x 5-1/2	4	32	1.93	5-1/2	3-13/16
CP38-32	2	--	--	2.19	5-1/20	3-13/16

### PLUG (FOR FITTING)

Fitting End Plugs

Cast Wrot CP16-WP16-



Fitting

Mueller: WC-416 wrot  
-- cast  
Elkhart: 116 wrot  
-- cast  
Nibco: 616 wrot  
716 cast

Item No.	Nom. Size (in inches)	Box Qty	Mstr Crtn	Net Wt. Approx.	Dim A
WP16-08	1/2	10	100	.02	3/32
WP16-12	3/4	10	100	.07	1/8
WP16-16	1	10	100	1.15	5/32
CP16-16	1-1/2	10	100	--	--

## Product Specification:

Cello Products Inc. certifies that it manufactures all its cast brass and wrought copper solder joint fittings to the general specifications outlined in the following industry standards:

<i>Wrought Copper and Copper Alloy Solder Joint Pressure Fittings:</i>	ASME/ANSI Std. B16.22 - 2001
<i>Cast Copper Alloy Solder Joint Pressure Fittings:</i>	ASME/ANSI Std. B16.18 - 2001
<i>Wrought Copper and Wrought Copper Alloy Solder Joint Drainage Fittings -- DWV</i>	ASME/ANSI Std. B16.29 - 2001
<i>Cast Copper Alloy Solder Joint Drainage Fittings:</i>	ASME/ANSI Std. B16.23 - 2002
<i>Bronze Pipe Flanges and Flanged Fittings:</i>	ASME/ANSI Std. B16.24 - 2001
<i>Cast Bronze Threaded Fittings:</i>	ASME/ANSI Std. B16.15 - 1985
<i>Wrought Copper and Copper Alloy Braze - Joint Pressure Fitting</i>	ASME/ANSI Std. B16.50 - 2001
<i>Cast Copper Alloy Pipe Flanges and Flanged Fittings</i>	ASME/ANSI Std. B16.24 - 2001
<i>Wrought Copper LW Solder Joint Pressure Fittings:</i>	MSS SP-104 - 1990
<i>Cast Copper Alloy Flanges and Flanged Fittings Class 125, 150, 300:</i>	MSS SP-106 - 1990

Cello further certifies that the materials used to manufacture these fittings are made in compliance with the following industry standards:

### Tubular Wrought Copper:

*Standard Specification for Seamless Copper Tube:* ASTM B75 Alloy C12200

### Products Made From Sheet:

*Standard Specification for Copper Sheet, Strip, Plate  
and Rolled Bar:* ASTM B152 Alloy C11000

### Cast Products:

*Standard Specification for Copper Alloy Sand Castings for General  
Applications; Federal Specification WW-U-516 for Type III,  
Class A and B Copper Alloy Unions:* ASTM B584 Alloy C84400

The industry standards are: ANSI (American National Standards Institute); ASME (The American Society of Mechanical Engineers); MSS (Manufacturers Standardization Society of the Valve and Fittings Industry Inc.); ASTM (American Society for Testing and Materials).

All Cello Products Inc. wrought copper fittings are NSF 61 registered.

All pressure fittings manufactured by Cello Products Inc. have Canadian Registration Numbers (CRN)

0A4925.5C Pressure pipe fittings

0B4925.5C Flanges

(note - the 5 is needed to designate the first province of registration)

International Quality Standard: Cello Products is certified to ISO 9002 standards through QMI (Quality Management Institute) and will be certified to ISO 9001:2000, by 2004.