

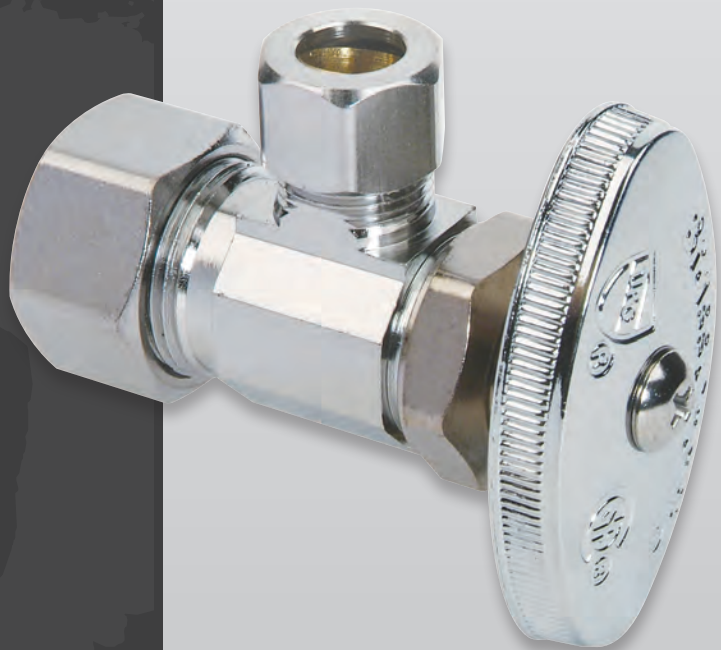
# BrassCraft®

## Multi-Turn Water Supply Stops

### The Industry Standard for Quality and Reliability.

Features and benefits include:

- Machined one-piece brass body provides strength, durability and long-lasting performance
- Easy-to-remove handle protects accidental stop operation during rough-ins
- Oval knurled handle provides a secure grip and smooth on/off operation
- Handle variations available for specific configurations - see variations page
- Heavy Pattern, Dual Outlet and Dual Outlet/Dual Shut Off configurations available



Scan for  
more  
information



# Part Numbering System

Example:



<b>0</b>	<b>R</b>	<b>1</b>	<b>9</b>	<b>P</b>	<b>X</b>	<b>X</b>	<b>C</b>	<b>1</b>
<b>Stop Type</b>	<b>Outlet Size</b>	<b>Inlet</b>	<b>Options</b>	<b>Compliant</b>	<b>Finish</b>	<b>Packaging</b>		
Iron Pipe Inlet	3/8" OD (1/4" Nom)	1/2" Nominal Copper, Angle	Compression PEX Inlet		Chrome	Individually Boxed		



## Handle\*

\*Drop the '0' in Stop Type, when using modifier

<b>S</b>	Loose Key, Lock Shield	<b>X</b>	Cross
<b>SS</b>	Screw Driver Slot, Lock Shield	<b>XX</b>	Round



## Stem\*

\*Drop the '0' in Stop Type, when using modifier

<b>T</b>	Stuffing Box
----------	--------------



## Stop Type

<b>OCR</b>	Compression Inlet	<b>OR</b>	Iron Pipe Inlet	<b>BRPX</b>	Barbed PEX Inlet
<b>OFCR</b>	Flare Outlet, Compression Inlet	<b>OFR</b>	Flare Outlet, Iron Pipe Inlet	<b>CS</b>	Sweat Extension Inlet
<b>FR</b>	Flare Outlet, Sweat Inlet	<b>R</b>	Sweat Inlet	<b>033</b>	Slip-Joint Outlet
<b>PR</b>	CPVC Inlet	<b>RD</b>	Sweat Outlet x Sweat Inlet		

### For Integral Shut-Offs:

<b>R</b>	Iron Pipe or Sweat Inlet
<b>DRS</b>	Screwdriver Slot, Less Lock Shield, Iron Pipe or Sweat Inlet



## Outlet Size (same as riser diameter)

<b>0</b>	1/4" OD	<b>4</b>	5/8" OD (1/2" Nom)
<b>1</b>	3/8" OD (1/4" Nom)	<b>8</b>	1/2" Iron Pipe
<b>2</b>	7/16" OD	<b>9</b>	3/8" Iron Pipe
<b>3</b>	1/2" OD (3/8" Nom)		



## Inlet Size & Style

<b>0</b>	3/8" Female Iron Pipe, Straight	<b>7</b>	1/2" Female Iron Pipe, Angle
<b>1</b>	3/8" OD Compression (1/4" Nom)	<b>9</b>	1/2" Nominal Copper, Angle
<b>2</b>	1/2" Female Iron Pipe, Straight	<b>A</b>	3/8" Nominal Copper, Straight
<b>4</b>	1/2" Nominal Copper, Straight	<b>B</b>	3/8" Nominal Copper, Angle
<b>5</b>	3/8" Female Iron Pipe, Angle		

### For Slip-Joint Outlets:

<b>01</b>	1/2" FIP Inlet, Angle
<b>05</b>	1/2" FIP Inlet, Straight
<b>41</b>	1/2" Nom Comp Inlet, Angle
<b>45</b>	1/2" Nom Comp Inlet, Straight

### For Integral Shut-Offs:

<b>83</b>	1/2" FIP x 1/2" MIP, Straight
<b>84</b>	1/2" Nom Sweat x 1/2" MIP, Straight
<b>44</b>	1/2" Nom Sweat x 1/2" Nom Sweat, Straight

### For Sweat Extension Inlets:

<b>40</b>	1/2" Nom Sweat x 3/8" OD Comp, Angle
<b>41</b>	1/2" Nom Sweat x 3/8" OD Comp, Straight
<b>47</b>	1/2" Nom Sweat x 1/2" OD Comp, Straight



## Options

<b>PX</b>	Compression PEX w/Tube Insert
-----------	-------------------------------

### For Sweat Extension Inlets:

<b>B</b>	w/Escutcheon
----------	--------------

### For Integral Shut-Offs:

<b>AA</b>	w/Check Inlet
<b>M</b>	w/Male Sweat Outlet



## Compliant

<b>X</b>	100% Compliant
----------	----------------



## Finish

<b>C</b>	Chrome Plated, Trayed
<b>R</b>	Rough/Unplated, Trayed

### For Sweat Extension Inlets:

<b>C</b>	Chrome Plated, Boxed
<b>R</b>	Rough/Unplated, Boxed



## Packaging

<b>1</b>	Individually Boxed (These stops are highlighted in <b>bold print</b> in this catalog).
----------	--

PART NO.	UPC	INLET X OUTLET	FINISH	QTY	LBS
----------	-----	----------------	--------	-----	-----

### Sweat x Compression - Angle With 5" Sweat Extension Tube (cont.)



CS40BX C	026613138299	1/2" Nom Sweat x 3/8" OD Comp With Bell Escutcheon	Chrome	30	12.5
<b>CS40BX C1</b>	026613135717	1/2" Nom Sweat x 3/8" OD Comp With Bell Escutcheon	Chrome	24	10.1
CS44BX C	026613149431	3/8" Nom Sweat x 3/8" OD Comp With Bell Escutcheon	Chrome	30	12.6

### Sweat x Compression - Straight With 5" Sweat Extension Tube



CS41X C	026613149370	1/2" Nom Sweat x 3/8" OD Comp	Chrome	30	11.9
CS47X C	026613149455	1/2" Nom Sweat x 1/2" OD Comp	Chrome	30	12.8



CS41BX C	026613137896	1/2" Nom Sweat x 3/8" OD Comp With Bell Escutcheon	Chrome	30	13.5
<b>CS41BX C1</b>	026613136042	1/2" Nom Sweat x 3/8" OD Comp With Bell Escutcheon	Chrome	24	10.8
CS47BX C	026613149462	1/2" Nom Sweat x 1/2" OD Comp With Bell Escutcheon	Chrome	30	14.4

### Sweat x Flare - Angle



FR19X C	026613149547	1/2" Nom Sweat x 3/8" OD Flare	Chrome	60	15.3
FR19X R	026613149554	1/2" Nom Sweat x 3/8" OD Flare	Rough	60	15.1
FR39X C	026613149561	1/2" Nom Sweat x 1/2" OD Flare	Chrome	60	17.5

### †Crimp PEX Barb x Compression - Angle



BRPX1BX C	026613149059	3/8" Nom Barb x 3/8" OD Comp	Chrome	60	10.4
BRPX09X C	026613149011	1/2" Nom Barb x 1/4" OD Comp	Chrome	60	9.8
BRPX09X R	026613149035	1/2" Nom Barb x 1/4" OD Comp	Rough	60	9.8
BRPX19X C	026613138206	1/2" Nom Barb x 3/8" OD Comp	Chrome	60	10.1
BRPX19X R	026613138213	1/2" Nom Barb x 3/8" OD Comp	Rough	60	10.1

### †Crimp PEX Barb x Compression - Straight



BRPX04X C	026613148991	1/2" Nom Barb x 1/4" OD Comp	Chrome	60	12.7
BRPX04X R	026613149004	1/2" Nom Barb x 1/4" OD Comp	Rough	60	12.7
BRPX14X C	026613142326	1/2" Nom Barb x 3/8" OD Comp	Chrome	60	13.6
BRPX14X R	026613149042	1/2" Nom Barb x 3/8" OD Comp	Rough	60	13.6

### †Crimp PEX Barb x Barb - Straight



BRPX44X C	026613139814	1/2" Nom Barb x 1/2" Nom Barb	Chrome	60	11.6
BRPX44X R	026613136691	1/2" Nom Barb x 1/2" Nom Barb	Rough	60	11.6

### ΔCPVC Solvent Weld x Compression - Angle



PR09X R	026613135281	1/2" Nom CPVC x 1/4" OD Comp	Rough	60	13.9
PR19X C	026613136752	1/2" Nom CPVC x 3/8" OD Comp	Chrome	60	14.2
<b>PR19X C1</b>	026613138589	1/2" Nom CPVC x 3/8" OD Comp	Chrome	24	5.9
PR19X R	026613142555	1/2" Nom CPVC x 3/8" OD Comp	Rough	60	14.2
PR39X C	026613153643	1/2" Nom CPVC x 1/2" OD Comp	Chrome	60	16.3
PR39X R	026613142395	1/2" Nom CPVC x 1/2" OD Comp	Rough	60	16.3

■ Denotes best selling Multi-Turn Supply Stops.

† For Brass "Crimp PEX" fittings and stops ASTM F1807

Δ CPVC pre-torqued fittings eliminate the need for tightening on the job.