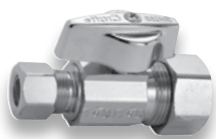


# Part Numbering System

KT 1/4 Turn Ball Stops

Example:



<b>K T</b>	<b>C R</b>	<b>1</b>	<b>9</b>	<b>F</b>	<b>C</b>	<b>1</b>
Stop Style	Stop Type	Outlet	Inlet	Option	Finish	Packaging
1/4 Turn Ball Stop	Compression Inlet	3/8" OD (1/4" Nom)	1/2" Nominal Copper, Angle	Female Compression	Chrome	Individually Boxed



## Stop Style

KT	1/4 Turn Ball Stop
KTS	1/4 Turn Ball Stop w/Loose Key



## Stop Type

CR	Compression Inlet	BRPX	Barbed PEX Inlet
PR	CPVC Inlet	CS	Sweat Extension Inlet
R	Iron Pipe or Sweat Inlet	33	Slip-Joint Outlet



## Outlet

0	1/4" OD	3	1/2" OD (3/8" Nom)
1	3/8" OD (1/4" Nom)	4	5/8" OD (1/2" Nom)



## Inlet

0	3/8" Female Iron Pipe, Straight
1	3/8" OD Compression (1/4" Nom)
2	1/2" Female Iron Pipe, Straight
4	1/2" Nominal Copper, Straight
5	3/8" Female Iron Pipe, Angle
7	1/2" Female Iron Pipe, Angle
9	1/2" Nominal Copper, Angle

### For Slip-Joint Outlets:

01	1/2" FIP Inlet, Angle
05	1/2" FIP Inlet, Straight
41	1/2" Nom Comp Inlet, Angle
45	1/2" Nom Comp Inlet, Straight

### For Sweat Extension Inlets:

40	1/2" Nom Sweat x 3/8" OD Comp, Angle
41	1/2" Nom Sweat x 3/8" OD Comp, Straight



## Option

F	Female Compression
---	--------------------

### For Sweat Extension Inlets:

B	With Escutcheon
---	-----------------



## Finish

C	Chrome Plated
R	Rough/Unplated

### For Sweat Extension Inlets:

C	Chrome Plated, Boxed
R	Rough/Unplated, Boxed



## Packaging

1	Individually Boxed (These stops are highlighted in <b>bold print</b> in this catalog).
---	--