

Whole-house Ventilation Options

Fan Series	Model	CFM	0.25" CFM	Sones	Motor Type	Sensing	Duct Size	Page No.
UltraGreen Multi Speed	ZB80	80	80	<0.3*	DC	—	6" or 4"	12-13
	ZB80M	80	80	<0.3*	DC	Motion	6" or 4"	12-13
	ZB110	110	110	<0.3	DC	—	6"	12-13
	ZB110H	110	110	<0.3	DC	Humidity	6"	12-13
	ZB110M	110	110	<0.3	DC	Motion	6"	12-13
UltraGreen Single Speed	XB50	50	50	<0.3	DC	—	6" or 4"	12-13
	XB80	80	80	<0.3*	DC	—	6" or 4"	12-13
	XB110	110	110	<0.3	DC	—	6"	12-13
	XB110H	110	110	<0.3	DC	Humidity	6"	12-13
UltraPro	RB80	80	60	<0.3	PSC	—	4"	14-15
	RB110	110	91	0.6	PSC	—	4"	14-15
QTXE SmartSense**	QTXE080	80	56	0.3	PSC	—	6"	18
	QTXE110	110	86	0.7	PSC	—	6"	18
	SSQTXE080	80	56	0.7	PSC	—	6"	22-23
	SSQTXE110	110	86	0.7	PSC	—	6"	22-23
LoProfile	LP80	80	55	1.0	PSC	—	4"	29
InVent	AE80	80	60	0.8	PSC	—	4"	26
	AE50	50	92	0.5	PSC	—	4"	26

ENERGY STAR® fans use 70% less energy, on average, than standard models and may qualify for local utility rebates

*With 6" duct (0.3 sones with 4" duct)

**SmartSense Models: SSQTXE080 and SSQTXE110 (see pages 22 and 23)



Fan/Light Series	Model	CFM	0.25" CFM	Sones	Motor Type	Sensing	Duct Size	Page No.
UltraGreen Multi Speed	ZB80L	80	80	<0.3*	DC	—	6" or 4"	12
	ZB80ML	80	80	<0.3*	DC	Motion	6" or 4"	12
	ZB110L	110	110	<0.3	DC	—	6"	12
	ZB110HL	110	110	<0.3	DC	Humidity	6"	12
	ZB110ML	110	110	<0.3	DC	Motion	6"	12
UltraGreen Single Speed	XB50L	50	50	<0.3	DC	—	6" or 4"	12
	XB80L	80	80	<0.3*	DC	—	6" or 4"	12
	XB110L	110	110	<0.3	DC	—	6"	12
UltraPro	RB80L	80	60	<0.3	PSC	—	4"	14-15
	RB110L	110	91	0.8	PSC	—	4"	14-15
QTXE	QTXE080FLT	80	56	0.3	PSC	—	6"	18
	QTXE110FLT	110	86	0.7	PSC	—	6"	18
InVent	AE80L	80	60	0.8	PSC	—	4"	26
	A80L	80	92	1.0	PSC	—	4"	26

ENERGY STAR® fans use 70% less energy, on average, than standard models and may qualify for local utility rebates

Note that in addition to exhaust solutions to meet DUV requirements, we also offer a full line of balanced ventilation models (HRVs and ERVs).



BROAN CODE KEY

The exclusive online tool that ensures compliant ventilation selection.

Specifying a dwelling unit ventilation (DUV) system for residences can be complicated. Code Key from Broan is the only online resource that helps you select the right product in minutes. Choose the dwelling's state, home size facts and user preferences to receive a list of recommended ventilation products. Change parameters to instantly see a range of options. Code Key requires no software and works on mobile devices. It's another way Broan—the pioneer in ventilation for more than 80 years—leads the ventilation industry with forward-thinking products and customer service.

Broan.com/tools-landing-page/codekey



ULTRAQUICK™ INSTALLATION TECHNOLOGY

ULTRA™ Series Ventilation Fans are engineered to be the fastest, easiest, most universal installation in remodel, retrofit or new construction—in any type of joist or truss system. Exclusive features simplify room-side installation to save valuable time and money.

Inside/outside wiring capability provides flexible new or retrofit installation

Pre-installed screws in the mounting frame enable quick installation

Vertical positioning tabs ensure the housing is in the right place

The expandable mounting frame adjusts from 14"-24" and fits any type of joist, I-joist or truss construction



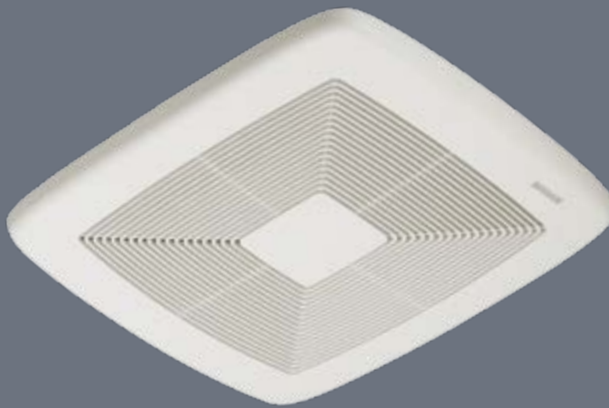
ULTRA PRO FEATURES

- Provide your customers extremely quiet operation with innovative sound reduction technologies.
- QStream™ technology features airflow-smoothing baffles to reduce turbulence.
- Optional RDFU Premium Radiation Damper Kit available for RB models.

The preferred install choice for professionals to deliver quiet performance



RB80 | RB110



RB80L | RB110L



Ultra Pro Series

Model	Duct Size	CFM	Sones	Light/Night Light	Housing Dims (in)			Grille Dims (in)		Grille Finish	UL Listed for Tub/Shower Use	ENERGY STAR®
					W	L	H	L	W			
Single-Speed Fans												
RB80	4"	80	<0.3	—	11 ³ / ₈	10 ¹ / ₂	7 ⁵ / ₈	13	14	White Polymeric	Yes	Yes
RB110	4"	110	0.6	—	11 ³ / ₈	10 ¹ / ₂	7 ⁵ / ₈	13	14	White Polymeric	Yes	Yes
Single-Speed Fan/Lights												
RB80L	4"	80	<0.3	2- 18W GU24 / 4W	11 ³ / ₈	10 ¹ / ₂	7 ⁵ / ₈	13	13 ³ / ₄	White Polymeric	Yes	Yes
RB110L	4"	110	0.8	2- 18W GU24 / 4W	11 ³ / ₈	10 ¹ / ₂	7 ⁵ / ₈	13	13 ³ / ₄	White Polymeric	Yes	Yes

ENERGY STAR® fans use 70% less energy, on average, than standard models and may qualify for local utility rebates



SELECTION GUIDE

		57W 57V	59W	61W 61V	62W 62V	63W 63V	64W 64V	66W 66V	67W 67V	68W 68V	69WL 69VL	70TW	71V	72W 72V	73	77DW 77DV	78W 78V	269WL 269VL	685WL	82W, DH100W	TC24H	
Utility Fans	12C		•	•			•				•	•	•	•			•			•	•	
	502	•	•	•			•				•	•	•	•			•			•	•	
	503	•	•	•			•				•	•	•	•			•			•	•	
	504	•	•	•			•				•	•	•	•			•			•	•	
	505	•	•	•			•				•	•	•	•			•			•	•	
	506 & 507																					
	508	•	•	•			•				•	•	•	•			•			•	•	
	509	•	•	•							•	•		•			•			•	•	
	509S ¹		•	•			•					•	•				•			•	•	
	510 ²		•	•			•					•	•				•			•	•	
	511 ²											•					•					
512 & 512M	•	•	•								•	•	•	•			•			•	•	
673		•	•				•				•	•	•				•			•	•	
Ventilation Fans	670	•	•	•			•				•	•	•	•			•			•	•	
	682	•	•	•			•				•	•	•	•			•			•	•	
	688	•	•	•			•				•	•	•	•			•			•	•	
	689	•	•	•			•				•	•	•	•			•			•	•	
	690	•	•	•			•				•	•	•	•			•			•	•	
	LP80	•	•	•			•				•	•	•	•			•			•	•	
	QTXE080 QTXE110, QTXE150		•	•		•	•			•	•	•	•				•	•		•	•	
	QTXE110S									•	•											
	XB50										•							•				
	XB80										•							•				
	XB110										•							•				
	XB110H									•	•							•				
	ZB80									•								•	•			
	ZB80M									•	•							•				
	ZB110									•								•	•			
	ZB110H									•	•							•				
	ZB110M									•	•							•				
	RB80, RB110		•	•							•										•	
	A80HD		•	•							•										•	
	AE50, A80, AE80, AE80B, A110, AE110		•	•							•										•	
Ventilation Fan/Lights	657	•	•	•		•	•			•		•	•	•						•	•	
	678	•	•	•		•	•			•		•	•	•						•	•	
	696	•	•	•		•	•			•		•	•	•						•	•	
	744					•				•		•								•		
	744FL					•				•		•								•		
	744LED					•				•		•								•		
	744SFL					•		•	•	•		•								•		
	750	•	•	•	•		•	•	•	•		•	•	•				•	•	•	•	
	751	•	•	•		•	•			•		•	•	•				•		•	•	
	791LEDM	•	•				•			•		•						•				
	RB80L, RB110L					•	•			•								•		•		
	AE80L, AE80BL, AE110L					•	•			•								•		•		
	A50L, A70L, A80L A110L					•	•			•								•		•		

¹Built-in on/off switch. ²Built-in on/off variable switch

Fan/Lights

Model	Page	CFM	Sones, HVI-Certified	Baths up to () Sq Ft	Lighting Watts Main/ Night Light	ENERGY STAR®	Fluorescent Lighting	Duct Size"	Housing Dims			Grille Dims		Grille Finish	Amps
									L"	W"	H"	L"	W"		
657	30	70	4.0	65	100	—	—	4	14 ¹ / ₄	8 ³ / ₄	5 ³ / ₄	16 ³ / ₄	10 ⁵ / ₈	White Polymeric	2.0
678	30	50	2.5	45	100	—	—	4	8 ³ / ₄	8	5 ³ / ₄	11 ¹ / ₈	10 ⁵ / ₈	White Polymeric	1.6
696	30	100	4.5	90	100	—	—	4	14 ¹ / ₄	8 ³ / ₄	5 ³ / ₄	16 ³ / ₄	10 ⁵ / ₈	White Polymeric	2.0
744	34	70	1.5	65	75	—	—	4	8 ³ / ₄	12 ³ / ₄	6 ³ / ₄	7 ³ / ₈ Dia	—	Matte White	1.2
744FL	34	70	1.5	65	14	Yes	Yes	4	8 ³ / ₄	12 ³ / ₄	6 ³ / ₄	7 ³ / ₈ Dia	—	Matte White	0.7
744LED	34	70	1.5	65	14W LED	Yes	—	4	8 ³ / ₄	12 ³ / ₄	6 ³ / ₄	7 ³ / ₈ Dia	—	Matte White	0.55
744SFL	34	70	1.5	65	14	Yes	Yes	4	8 ³ / ₄	12 ³ / ₄	6 ³ / ₄	7 ³ / ₈ Dia	—	Matte White	0.7
750	30	100	3.5	90	100 / 7	—	—	4	9	9	6	15 Dia	—	White Polymeric	1.9
751	30	100	3.5	90	100	—	—	4	9	9	6	15 Dia	—	White Polymeric	1.9
791LEDM	35	100	1.5	100	9W LED	Yes	LED	4	9 ¹ / ₄	10	5 ³ / ₄	12 ⁵ / ₈	12 ⁵ / ₈	White	0.5
QTX110SL	20	110	0.9	100	100 / 4	—	—	6	11 ³ / ₈	10 ¹ / ₂	7 ⁵ / ₈	13	13 ³ / ₄	White Polymeric	0.3
QTXE080FLT	18	80	0.3	75	2- 18W fluor/4	Yes	Yes	6	11 ³ / ₈	10 ¹ / ₂	7 ⁵ / ₈	13 ³ / ₈	14 ¹ / ₄	White Polymeric	1.0
QTXE110FLT	18	110	0.7	100	2- 18W fluor/4	Yes	Yes	6	11 ³ / ₈	10 ¹ / ₂	7 ⁵ / ₈	13 ³ / ₈	14 ¹ / ₄	White Polymeric	1.0
QTXE110SFLT	20	110	0.7	100	2- 18W fluor/4	Yes	Yes	6	11 ³ / ₈	10 ¹ / ₂	7 ⁵ / ₈	12 ⁷ / ₈	13 ³ / ₄	White Polymeric	0.3
QTXE150FLT	18	150	1.4	140	2- 18W fluor/4	Yes	Yes	6	11 ³ / ₈	10 ¹ / ₂	7 ⁵ / ₈	13 ³ / ₈	14 ¹ / ₄	White Polymeric	1.2
RB80L	15	80	<0.3	75	2- 18W fluor/4	Yes	Yes	4	11 ³ / ₈	10 ¹ / ₂	7 ⁵ / ₈	13	13 ³ / ₄	White Polymeric	1.0
RB110L	15	110	0.8	100	2- 18W fluor/4	Yes	Yes	4	11 ³ / ₈	10 ¹ / ₂	7 ⁵ / ₈	13	13 ³ / ₄	White Polymeric	1.0
XB50L	13	50	<0.3	45	2- 18W fluor/4	Yes	Yes	6 / 4	10 ¹ / ₂	11 ³ / ₈	7 ⁵ / ₈	13	13 ³ / ₄	White Polymeric	0.7
XB80L	13	80	<0.3*	75	2- 18W fluor/4	Yes	Yes	6 / 4	10 ¹ / ₂	11 ³ / ₈	7 ⁵ / ₈	13	13 ³ / ₄	White Polymeric	0.7
XB110L	13	110	<0.3	100	2- 18W fluor/4	Yes	Yes	6	10 ¹ / ₂	11 ³ / ₈	7 ⁵ / ₈	13	13 ³ / ₄	White Polymeric	0.9
XB110HL	13	110	<0.3	100	2- 18W fluor/4	Yes	Yes	6	10 ¹ / ₂	11 ³ / ₈	7 ⁵ / ₈	13 ¹ / ₈	14	White Polymeric	0.9
ZB80L	13	80	<0.3*	75	2- 18W fluor/4	Yes	Yes	6 / 4	10 ¹ / ₂	11 ³ / ₈	7 ⁵ / ₈	13	13 ³ / ₄	White Polymeric	0.8
ZB80ML	13	80	<0.3*	75	2- 18W fluor/4	Yes	Yes	6 / 4	10 ¹ / ₂	11 ³ / ₈	7 ⁵ / ₈	13 ¹ / ₈	14	White Polymeric	0.8
ZB110L	13	110	<0.3	100	2- 18W fluor/4	Yes	Yes	6	10 ¹ / ₂	11 ³ / ₈	7 ⁵ / ₈	13	13 ³ / ₄	White Polymeric	0.9
ZB110HL	13	110	<0.3	100	2- 18W fluor/4	Yes	Yes	6	10 ¹ / ₂	11 ³ / ₈	7 ⁵ / ₈	13 ¹ / ₈	14	White Polymeric	0.9
ZB110ML	13	110	<0.3	100	2- 18W fluor/4	Yes	Yes	6	10 ¹ / ₂	11 ³ / ₈	7 ⁵ / ₈	13 ¹ / ₈	14	White Polymeric	0.9

*With 6" duct (with 4" duct 0.3)

Heater/Fan/Lights

Model	Page	CFM	Sones, HVI-Certified	Lighting Watts Main/ Night Light	Housing Dimensions			Grille Dimensions		Grille Finish	Duct Size"	Amps	Total Connected		
					L"	W"	H"	L"	W"				Load In Watts	Heater Wattage	BTU
100HL	44	100	2.0	100W	16	10 ¹ / ₄	5 ⁷ / ₈	17 ¹ / ₂	11 ¹ / ₂	White Polymeric	4	14.5	1830	1500	5120
100HFL	44	100	2.0	27W Fluor. (Incl.)	16	10 ¹ / ₄	5 ⁷ / ₈	17 ¹ / ₂	11 ¹ / ₂	White Polymeric	4	14.0	1760	1500	5120
162*	45	70	3.5	*250W (1)	8 ¹ / ₈	8 ³ / ₈	6 ³ / ₈	10 ¹ / ₄	10 ¹ / ₄	White Polymeric	4	2.5	300	250*	853
164*	45	70	3.5	*250W (2)	14 ¹ / ₄	8 ³ / ₈	6 ³ / ₈	15 ⁵ / ₈	10 ¹ / ₄	White Polymeric	4	4.5	545	500*	1707
655	44	70	4.0	100W	14 ¹ / ₄	8 ³ / ₄	5 ³ / ₄	16 ³ / ₄	10 ⁵ / ₈	White Polymeric	4	12.8	1536	1300	4437
656	44	—	—	100W	14 ¹ / ₄	8 ³ / ₄	5 ³ / ₄	16 ³ / ₄	10 ⁵ / ₈	White Polymeric	—	11.9	1428	1300	4437
658	44	70	4.0	n/a	14 ¹ / ₄	8 ³ / ₄	5 ³ / ₄	16 ³ / ₄	10 ⁵ / ₈	White Polymeric	4	11.9	1428	1300	4437
659	44	50	2.5	100W	14 ¹ / ₄	8 ³ / ₄	5 ³ / ₄	16 ³ / ₄	10 ⁵ / ₈	White Polymeric	4	12.0	1440	1300	4437
QTX110HL	43	110	0.9	120W/7W	17 ⁵ / ₈	11 ³ / ₈	7 ⁵ / ₈	20	15	White Polymeric	6	14.6	1710	1500	5120
QTX110HFLT	43	110	0.9	36W Fluor. (GU24 Incl.)/7W	17 ⁵ / ₈	11 ³ / ₈	7 ⁵ / ₈	20	15	White Polymeric	6	13.9	1626	1500	5120

*Ventilation Fan/Bulb Heater versions

Bulb Heater (no fan)

Model	Page	CFM	Sones, HVI-Certified	Lighting Watts Main/ Night Light	Housing Dimensions			Grille Dimensions		Grille Finish	Duct Size"	Amps	Total Connected	
					L"	W"	H"	L"	W"				Load In Watts	Heater Wattage
161	45			n/a	8 ¹ / ₈	8 ³ / ₈	6 ³ / ₈	10 ¹ / ₄	10 ¹ / ₄	White Polymeric		2.1	250	853
163	45			n/a	8 ¹ / ₈	14 ¹ / ₄	6 ³ / ₈	15 ⁵ / ₈	10 ¹ / ₄	White Polymeric		4.3	500	1707

See models 162 and 164 above for Ventilation Fan/Bulb Heater versions