

Whole-house Ventilation Options

Fan Series	Model	CFM	0.25" CFM	Sones	Motor Type	Sensing	Duct Size	Page No.
ULTRA Green™ Multi Speed	ZB80	80	80	<0.3*	DC	—	6" or 4"	12-13
	ZB80M	80	80	<0.3*	DC	Motion	6" or 4"	12-13
	ZB110	110	110	<0.3	DC	—	6"	12-13
	ZB110H	110	110	<0.3	DC	Humidity	6"	12-13
	ZB110M	110	110	<0.3	DC	Motion	6"	12-13
ULTRA Green™ Single Speed	XB50	50	50	<0.3	DC	—	6" or 4"	12-13
	XB80	80	80	<0.3*	DC	—	6" or 4"	12-13
	XB110	110	110	<0.3	DC	—	6"	12-13
	XB110H	110	110	<0.3	DC	Humidity	6"	12-13
ULTRA Pro	RB80	80	60	<0.3	PSC	—	4"	15
	RB110	110	91	0.6	PSC	—	4"	15
QTXE SmartSense**	QTXE080	80	56	0.3	PSC	—	6"	18
	QTXE110	110	86	0.7	PSC	—	6"	18
	SSQTXE080	80	56	0.7	PSC	—	6"	22-23
	SSQTXE110	110	86	0.7	PSC	—	6"	22-23
LoProfile	LP80	80	55	1.0	PSC	—	4"	29
InVent	AE80	80	60	0.8	PSC	—	4"	26
	AE50	50	92	0.5	PSC	—	4"	26

ENERGY STAR® fans use 70% less energy, on average, than standard models and may qualify for local utility rebates

*With 6" duct (0.3 sones with 4" duct)

**SmartSense Models: SSQTXE080 and SSQTXE110 (see pages 22 and 23)



Fan/Light Series	Model	CFM	0.25" CFM	Sones	Motor Type	Sensing	Duct Size	Page No.
ULTRA Green™ Multi Speed	ZB80L	80	80	<0.3*	DC	—	6" or 4"	12-13
	ZB80ML	80	80	<0.3*	DC	Motion	6" or 4"	12-13
	ZB110L	110	110	<0.3	DC	—	6"	12-13
	ZB110HL	110	110	<0.3	DC	Humidity	6"	12-13
	ZB110ML	110	110	<0.3	DC	Motion	6"	12-13
ULTRA Green™ Single Speed	XB50L	50	50	<0.3	DC	—	6" or 4"	12-13
	XB80L	80	80	<0.3*	DC	—	6" or 4"	12-13
	XB110L	110	110	<0.3	DC	—	6"	12-13
	XB110HL	110	110	<0.3	DC	Humidity	6"	12-13
ULTRA Pro	RB80L	80	60	<0.3	PSC	—	4"	15
	RB110L	110	91	0.8	PSC	—	4"	15
QTXE	QTXE080FLT	80	56	0.3	PSC	—	6"	18
	QTXE110FLT	110	86	0.7	PSC	—	6"	18
InVent	AE80L	80	60	0.8	PSC	—	4"	26
	A80L	80	92	1.0	PSC	—	4"	26

ENERGY STAR® fans use 70% less energy, on average, than standard models and may qualify for local utility rebates

Note that in addition to exhaust solutions to meet DUV requirements, we also offer a full line of balanced ventilation models (HRVs and ERVs).



BROAN CODE KEY

The exclusive online tool that ensures compliant ventilation selection.

Specifying a dwelling unit ventilation (DUV) system for residences can be complicated. Code Key from Broan is the only online resource that helps you select the right product in minutes. Choose the dwelling's state, home size facts and user preferences to receive a list of recommended ventilation products. Change parameters to instantly see a range of options. Code Key requires no software and works on mobile devices. It's another way Broan—the pioneer in ventilation for more than 80 years—leads the ventilation industry with forward-thinking products and customer service.

[Broan.com/tools-landing-page/codekey](https://broan.com/tools-landing-page/codekey)



Wall or ceiling mount, LoProfile is the right fan for a tight fit. The new Broan LoProfile™ Fan is our latest solution for installations where conventional ventilation simply won't fit. Where multi-family applications require it, the LoProfile™ fan is narrow enough to be installed in a wall between 2x4 studs. When plumbing or electrical obstructions are found behind the drywall in ceiling remodel applications our LoProfile™ fan can still fit without having to move anything. And that means most any room with space constraints can have powerful, quiet, efficient ventilation.

ROOM.

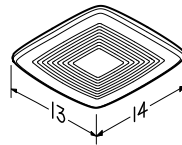
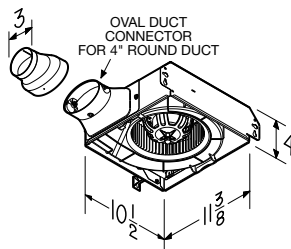


LP80

The oval connector accepts standard 4" duct, or 3" duct with the supplied adapter

Electrical connections can be made through the top or the side of the housing

LOPROFILE™



Model	CFM	Sones	ENERGY STAR®
LP80	80	1.0	Yes

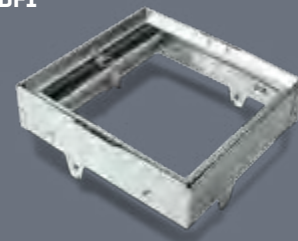
ENERGY STAR® fans use 70% less energy, on average, than standard models and may qualify for local utility rebates



FEATURES

- Fits in 2x4 ceiling or wall construction
- 80 CFM with 4" duct ensures ample air movement; 70 CFM with 3" duct reducer
- >50 CFM at 0.25" static pressure meets ASHRAE 62.2 local ventilation requirements (with 4" oval duct or 3" round duct)
- Only 1.0 sones for quiet operation (4" duct)
- 4" oval or 3" round duct connection for installation flexibility
- Efficient operation lowers utility bills
- Ideal for multi-family applications
- Compatible with RDF1 Premium Radiation Damper
- Project Packs available

RDF1



SELECTION GUIDE

		57W 57V	59W	61W 61V	62W	63W 63V	64W 64V	66W 66V	67W	68W 68V	69W 69V	70TW	71V	72W 72V	73	77DW 77DV	78W 78V	269WL 269VL	685WL	82W, DH100W	
Utility Fans	12C		•	•			•				•	•	•	•			•			•	
	502	•	•	•			•				•	•	•	•			•			•	
	503	•	•	•			•				•	•	•	•			•			•	
	504	•	•	•			•				•	•	•	•			•			•	
	505	•	•	•			•				•	•	•	•			•			•	
	506 & 507																				
	508	•	•	•			•				•	•	•	•			•			•	
	509	•	•	•							•	•		•			•			•	
	509S ¹		•	•			•					•	•				•			•	
	510 ²		•	•			•					•	•				•			•	
	511 ²											•					•				
	512 & 512M	•	•	•								•	•	•	•			•			•
673		•	•			•					•	•	•			•				•	
Ventilation Fans	670	•	•	•			•				•	•	•	•			•			•	
	671	•	•	•			•				•	•	•	•			•			•	
	682	•	•	•			•				•	•	•	•			•			•	
	688	•	•	•			•				•	•	•	•			•			•	
	689	•	•	•			•				•	•	•	•			•			•	
	690	•	•	•			•				•	•	•	•			•			•	
	LP80	•	•	•			•				•	•	•	•			•			•	
	QTXE080 QTXE110, QTXE150		•	•		•	•			•	•	•	•				•	•			•
	QTXE110S									•	•										
	XB50										•							•			•
	XB80										•							•			•
	XB110										•							•			•
	XB110H									•	•							•			•
	ZB80									•								•	•		•
	ZB80M									•	•							•			•
	ZB110									•								•	•		•
	ZB110H									•	•							•			•
	ZB110M									•	•							•			•
	RB80, RB110		•	•							•										•
	A80HD	•	•	•							•										•
AE50, A80, AE80, AE80B, AE80S, A110, AE110, AE110S	•	•	•							•										•	
Ventilation Fan/Lights	657	•	•	•		•	•			•		•	•	•						•	
	678	•	•	•		•	•			•		•	•	•						•	
	696	•	•	•		•	•			•		•	•	•						•	
	741SN	•	•	•		•	•			•		•	•	•						•	
	744					•				•		•								•	
	744FL					•				•		•								•	
	744LED					•				•		•								•	
	744SFL					•		•	•	•		•								•	
	750	•	•	•	•		•	•	•	•		•	•	•				•	•		•
	751	•	•	•		•	•			•		•	•	•				•			•
	754SN	•	•	•		•	•			•		•	•	•				•			•
	761BN, 761RB, 761WHA	•	•	•		•	•			•		•	•	•							•
	791LEDM	•	•				•			•		•							•		•
	RB80L, RB110L					•	•			•										•	•
	AE80L, AE80BL, AE80SL, AE110L, AE110SL	•				•	•			•										•	•
	A50L, A70L, A80L A110L	•				•	•			•										•	•

¹Built-in on/off switch. ²Built-in on/off variable switch

INVENT Fans and Fan/Lights

Model	Page	CFM	Sones, HVI-Certified	Baths up to () Sq Ft	Lighting Watts Main/ Night Light	ENERGY STAR®	Fluorescent Lighting	Duct Size"	Housing Dims			Grille Dims		Grille Finish	Amps
								L"	W"	H"	L"	W"			
AE80	26	80	0.8	75	—	Yes	—	4	9 ³ / ₄	10	5 ³ / ₄	11 ³ / ₈	12	White Polymeric	0.3
AE110	26	110	1.3	105	—	Yes	—	4	9 ³ / ₄	10	5 ³ / ₄	11 ³ / ₈	12	White Polymeric	0.3
AE80B	26	80	1.5	75	—	Yes	—	4	9 ³ / ₄	10	5 ³ / ₄	11 ³ / ₈	12	White Polymeric	0.3
AE50	26	50	0.5	45	—	Yes	—	4	9 ³ / ₄	10	5 ³ / ₄	11 ³ / ₈	12	White Polymeric	0.2
A80HD*	26	80	2.0	75	—	No	—	4	9 ³ / ₄	10	5 ³ / ₄	11	12	White Painted Metal	0.37
A80	26	80	2.0	75	—	No	—	4	9 ³ / ₄	10	5 ³ / ₄	11 ³ / ₈	12	White Polymeric	0.37
AE80S	20	80	0.8	75	—	Yes	—	4	9 ³ / ₄	10	5 ³ / ₄	11 ³ / ₈	12	White Polymeric	0.3
A110	26	110	3.0	105	—	No	—	4	9 ³ / ₄	10	5 ³ / ₄	11 ³ / ₈	12	White Polymeric	0.4
AE110S	20	110	1.0	100	—	Yes	—	4	9 ³ / ₄	10	5 ³ / ₄	11 ³ / ₈	12	White Polymeric	0.3
A80L**	26	80	1.0	75	A19 Base	No	—	4	9 ³ / ₄	10	5 ³ / ₄	11 ¹ / ₂	12 ¹ / ₈	White Polymeric	1.2
A110L**	26	110	1.3	105	A19 Base	No	—	4	9 ³ / ₄	10	5 ³ / ₄	11 ¹ / ₂	12 ¹ / ₈	White Polymeric	1.2
A50L**	26	50	1.5	45	A19 Base	No	—	4	9 ³ / ₄	10	5 ³ / ₄	11 ¹ / ₂	12 ¹ / ₈	White Polymeric	1.0
A70L**	26	70	2.0	65	A19 Base	No	—	4	9 ³ / ₄	10	5 ³ / ₄	11 ¹ / ₂	12 ¹ / ₈	White Polymeric	1.2
AE80BL	26	80	1.5	75	11W LED	Yes	LED	4	9 ³ / ₄	10	5 ³ / ₄	11 ³ / ₄	12 ¹ / ₂	White Polymeric	0.3
AE80L	26	80	0.8	75	11W LED	Yes	LED	4	9 ³ / ₄	10	5 ³ / ₄	11 ³ / ₄	12 ¹ / ₂	White Polymeric	0.3
AE80SL	20	80	0.8	75	11W LED	Yes	LED	4	9 ³ / ₄	10	5 ³ / ₄	11 ³ / ₄	12 ¹ / ₂	White Polymeric	1.2
AE110L	26	110	1.3	105	11W LED	Yes	LED	4	9 ³ / ₄	10	5 ³ / ₄	11 ³ / ₄	12 ¹ / ₂	White Polymeric	0.3
AE110SL	20	110	1.0	100	11W LED	Yes	LED	4	9 ³ / ₄	10	5 ³ / ₄	11 ³ / ₄	12 ¹ / ₂	White Polymeric	1.2

*Metal grille. **Bulb not included.

Fans

Model	Page	CFM	Sones, HVI-Certified	Baths up to () Sq Ft	ENERGY STAR®	Duct Size"	L"	W"	H"	Grille Dims		Grille Finish	Amps
										L"	W"		
670	30	50	3.5	45	—	3	7 ¹ / ₄	7 ¹ / ₂	3 ⁵ / ₈	9	9 ¹ / ₄	White Polymeric	0.8
671	30	70	6.0	65	—	3	7 ¹ / ₄	7 ¹ / ₂	3 ⁵ / ₈	9	9 ¹ / ₄	White Polymeric	1.2
682	31	—	—	—	—	Duct-free	7 ¹ / ₈	7 ¹ / ₈	3 ³ / ₄	8 ¹ / ₂	8 ¹ / ₂	White Polymeric	1.0
688	30	50	4.0	45	—	3	7 ¹ / ₄	7 ¹ / ₂	3 ⁵ / ₈	9	9 ¹ / ₄	White Polymeric	0.9
689	30	60	5.5	55	—	3	7 ¹ / ₄	7 ¹ / ₂	3 ⁵ / ₈	9	9 ¹ / ₄	White Polymeric	1.5
690**	31	60	3.0	55	—	—	—	—	—	9 ⁵ / ₈	11 ¹ / ₈	White Polymeric	1.5
LP80	29	80	1.0	75	Yes	4 / 3	11 ³ / ₈	10 ¹ / ₂	4	13	13 ³ / ₄	White Polymeric	0.3
SPK110	37	110	1.0	75	Yes	4	11 ³ / ₈	10 ¹ / ₂	7 ³ / ₄	13	14	White Polymeric	0.9
SSQTXE080	23	80	—	—	Yes	—	11 ³ / ₈	10 ¹ / ₂	7 ³ / ₄	—	—	—	—
SSQTXE110	23	110	—	—	Yes	—	11 ³ / ₈	10 ¹ / ₂	7 ³ / ₄	—	—	—	—
QTXE080	18	80	0.3	75	Yes	6	11 ³ / ₈	10 ¹ / ₂	7 ⁵ / ₈	13	14	White Polymeric	0.4
QTXE110	18	110	0.7	100	Yes	6	11 ³ / ₈	10 ¹ / ₂	7 ⁵ / ₈	13	14	White Polymeric	0.3
QTXE110S	20	110	0.7	100	Yes	6	11 ³ / ₈	10 ¹ / ₂	7 ⁵ / ₈	12 ⁷ / ₈	13 ³ / ₄	White Polymeric	0.3
QTXE150	18	150	1.4	140	Yes	6	11 ³ / ₈	10 ¹ / ₂	7 ⁵ / ₈	13	14	White Polymeric	0.5
RB80	15	80	<0.3	75	Yes	4	11 ³ / ₈	10 ¹ / ₂	7 ⁵ / ₈	13	13 ³ / ₄	White Polymeric	0.3
RB110	15	110	0.6	100	Yes	4	11 ³ / ₈	10 ¹ / ₂	7 ⁵ / ₈	13	13 ³ / ₄	White Polymeric	0.3
XB50	13	50	<0.3	45	Yes	6 / 4	10 ¹ / ₂	11 ³ / ₈	7 ⁵ / ₈	13	13 ³ / ₄	White Polymeric	0.1
XB80	13	80	<0.3*	75	Yes	6 / 4	10 ¹ / ₂	11 ³ / ₈	7 ⁵ / ₈	13	13 ³ / ₄	White Polymeric	0.1
XB110	13	110	<0.3	100	Yes	6	10 ³ / ₂	11 ³ / ₈	7 ⁵ / ₈	13	13 ³ / ₄	White Polymeric	0.2
XB110H	13	110	<0.3	100	Yes	6	10 ³ / ₂	11 ³ / ₈	7 ⁵ / ₈	13 ¹ / ₈	14	White Polymeric	0.2
ZB80	13	80	<0.3*	75	Yes	6 / 4	10 ¹ / ₂	11 ³ / ₈	7 ⁵ / ₈	13	13 ³ / ₄	White Polymeric	0.1
ZB80M	13	80	<0.3*	75	Yes	6 / 4	10 ¹ / ₂	11 ³ / ₈	7 ⁵ / ₈	13 ¹ / ₈	14	White Polymeric	0.1
ZB110	13	110	<0.3	100	Yes	6	10 ³ / ₂	11 ³ / ₈	7 ⁵ / ₈	13	13 ³ / ₄	White Polymeric	0.2
ZB110H	13	110	<0.3	100	Yes	6	10 ³ / ₂	11 ³ / ₈	7 ⁵ / ₈	13 ¹ / ₈	14	White Polymeric	0.2
ZB110M	13	110	<0.3	100	Yes	6	10 ³ / ₂	11 ³ / ₈	7 ⁵ / ₈	13 ¹ / ₈	14	White Polymeric	0.2

Radiation Dampers can be found on page 11, 19, 22, 27, 29 and 72

*With 6" duct (with 4" duct 0.3)

**Replacement grille and motor kit

PERFORMANCE DATA INVENT

