

VERTICAL DISCHARGE

- Galvanized steel housing installs easily between ceiling joists
- Steel mounting brackets with keyhole slots for fast installation

504

- 10" vertical discharge
- Fits 10" round duct-use Model 472 transition/damper (available separately) for 8" round duct (performance will be reduced)

505

- 8" vertical discharge with built-in damper
- 8" fan, 8 $\frac{1}{4}$ " diameter housing

673

- 6" vertical discharge with built-in damper
- 6" paintable fan, spin-on, white polymeric grille

CHAIN-OPERATED UTILITY FANS

- Pull-chain opens the door and starts fan
- Housing adjusts to fit walls from 4 $\frac{1}{2}$ "-9 $\frac{1}{2}$ " thick
- Specially designed polymeric fan blade
- Housing features foam-insulated door for energy efficiency

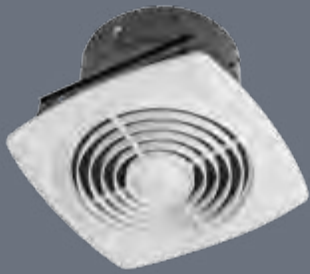
506

- 10" fan (10 $\frac{3}{8}$ " diameter sleeve)

507

- 8" fan (8 $\frac{3}{8}$ " diameter sleeve)

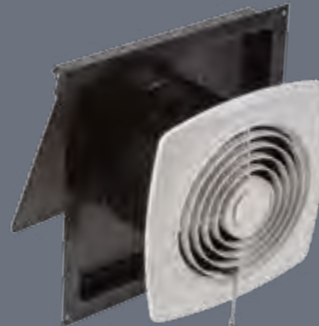
504 | 505



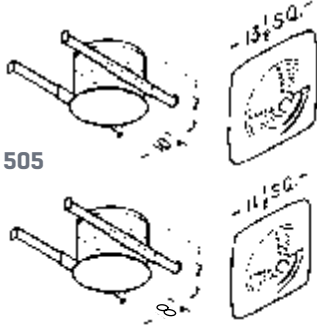
673



506 | 507



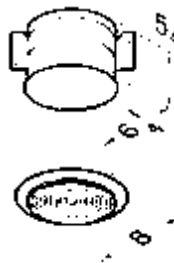
504



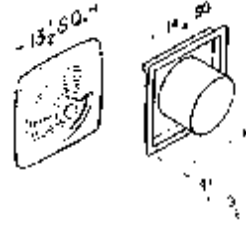
505



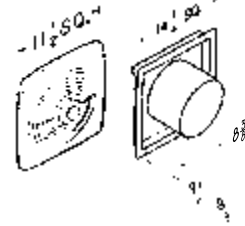
673



506



507



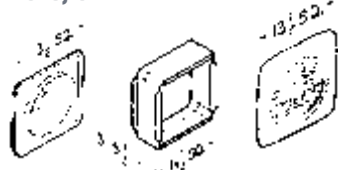
ROOM-TO-ROOM FANS

Room-to-Room ventilators provide quick solutions where more ventilation is needed—without installing new ductwork.

- Built-in variable speed control
- Easy installation through wall 3"-5 $\frac{1}{2}$ " thick
- Permanently lubricated motor
- Paintable white polymeric grilles
- Not for use in kitchens

510, 10"; **511**, 8"

510, 511



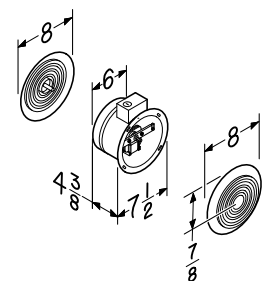
512

- 6" Room-to-Room
- Use 57W or 57V variable speed control separately

512



512



510 | 511

