

THROUGH-WALL FANS

- Housing adjusts to fit walls from 4½"-9½" thick
- Specially designed polymeric fan blade
- Built-in damper minimizes backdrafts for energy efficiency
- Paintable polymeric grilles
- Accessorize with wall switch or variable speed wall control
- Louvered exterior wall cap with built-in bird screen
- 6" diameter flexible aluminum duct included

508 (10"), **509/509S** (8")
 • 509S: features an integral ON/OFF rotary switch-no wall switch to wire

512M
 • 6" Through-Wall

12C MOTORDOR®

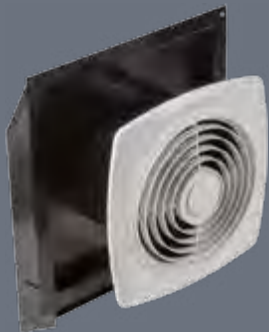
- 10" Through-Wall
- Separate motor opens and closes the vent door automatically

WALL/CEILING-MOUNT, SIDE DISCHARGE FANS

502, 503

- Installs easily between ceiling joists or wall studs
- Built-in damper prevents backdrafts
- Fits 3¼" x 10" duct

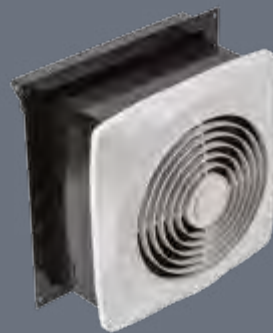
508 | 509 | 509S



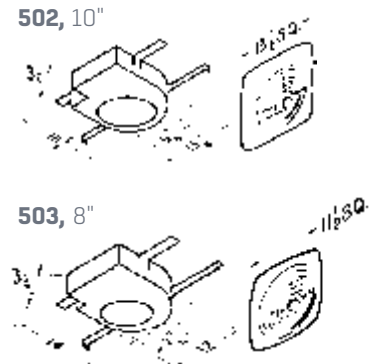
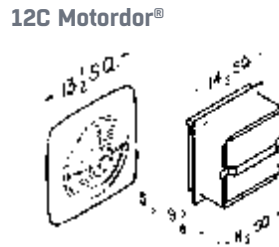
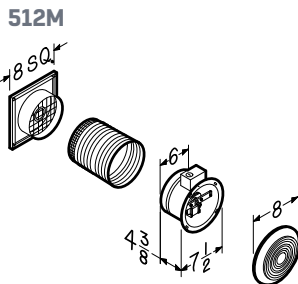
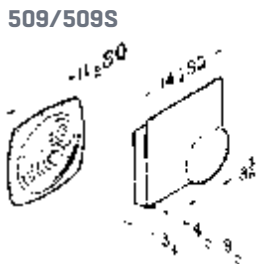
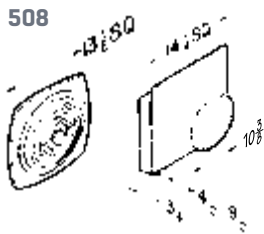
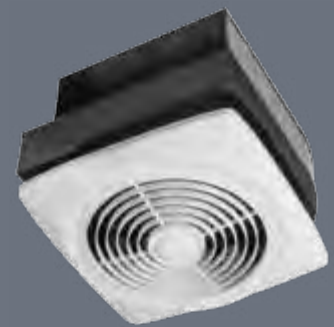
512M



12C MOTORDOR®



502 | 503



Model	CFM	Sones	Diameter	Sizing Specifications
506	470	8.0	10"	Fits 4½"-9½" thick walls
507	250	7.0	8"	Fits 4½"-9½" thick walls
510	380	6.5	10"	Fits 3"-5½" thick walls
511	180	4.5	8"	Fits 3"-5½" thick walls
502	270	8.0	10"	Fits 3¼" x 10" duct
503	160	5.0	8"	Fits 3¼" x 10" duct
508	270	6.0	10"	Fits 4½"-9½" thick walls
509/509S	180	6.5	8"	Fits 4½"-9½" thick walls 509S Integral ON/OFF Rotary Switch
512	90	3.5	6"	Fits up to 5½" thick walls
512M	70	3.5	6"	Fits up to 5¼"-10" thick walls
12C Motordor®	360	8.0	10"	Fits 5½"-97/8" thick walls
504	350	6.5	10"	Fits 10" round duct
505	180	6.5	8"	Fits 8" round duct
673	60	4.5	6"	Fits 6" round duct