



▶ **Quality is in every box we ship.** Even our boxes are higher-quality, so our products get to market damage-free and ready for installation. Our state-of-the-art inventory and shipping processes help get products where you need them – on time, every time.



RIGID AND IMC CONDUIT FITTINGS

Set Screw Connectors

 File No. E24001*: 236-DC2 thru 239-DC2; 236-DCI2 thru 239-DCI2

 File No. E24001: 3500 thru 3505; 236 thru 239; 236-I thru 239-I



1/2" thru 1"



2 1/2" thru 4"



2 1/2" thru 4"



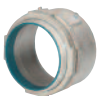
1/2" thru 1 1/2"



2"



1/2" thru 2"
Malleable



5" & 6"
Malleable

Catalog Number	Trade Size	Material
30-DC2	1/2"	Zinc Die Cast
31-DC2	3/4"	Zinc Die Cast
32-DC2	1"	Zinc Die Cast
236-DC2	2 1/2"	Zinc Die Cast
237-DC2	3"	Zinc Die Cast
238-DC2	3 1/2"	Zinc Die Cast
239-DC2	4"	Zinc Die Cast

236-DCI2	2 1/2"	Zinc Die Cast/ Insulated Throat
237-DCI2	3"	Zinc Die Cast/ Insulated Throat
238-DCI2	3 1/2"	Zinc Die Cast/ Insulated Throat
239-DCI2	4"	Zinc Die Cast/ Insulated Throat

236	2 1/2"	Steel
237	3"	Steel
238	3 1/2"	Steel
239	4"	Steel

236-I	2 1/2"	Steel/Insulated Throat
237-I	3"	Steel/Insulated Throat
238-I	3 1/2"	Steel/Insulated Throat
239-I	4"	Steel/Insulated Throat

3500-US	1/2"	Made in the USA/Steel
3501-US	3/4"	Made in the USA/Steel
3502-US	1"	Made in the USA/Steel
3503-US	1 1/4"	Made in the USA/Steel
3504-US	1 1/2"	Made in the USA/Steel
3505-US	2"	Made in the USA/Steel

3500	1/2"	Malleable Iron
3501	3/4"	Malleable Iron
3502	1"	Malleable Iron
3503	1 1/4"	Malleable Iron
3504	1 1/2"	Malleable Iron
3505	2"	Malleable Iron
3510	5"	Malleable Iron
3511	6"	Malleable Iron

3510-I	5"	Malleable Iron/ Insulated Throat
3511-I	6"	Malleable Iron/ Insulated Throat



Zinc



Steel



Malleable



Zinc 1/2" thru 1"



Zinc 2 1/2" thru 4"



Steel 2 1/2" thru 4"

Compression Connectors

 File No. E9391


Catalog Number	Trade Size	Material
256-DC2	2 1/2"	Zinc Die Cast
257-DC2	3"	Zinc Die Cast
258-DC2	3 1/2"	Zinc Die Cast
259-DC2	4"	Zinc Die Cast


256-DCI2	2 1/2"	Zinc Die Cast/ Insulated Throat
257-DCI2	3"	Zinc Die Cast/ Insulated Throat
258-DCI2	3 1/2"	Zinc Die Cast/ Insulated Throat
259-DCI2	4"	Zinc Die Cast/ Insulated Throat


3000-US	1/2"	Made in the USA/Steel
3001-US	3/4"	Made in the USA/Steel
3002-US	1"	Made in the USA/Steel
3003-US	1 1/4"	Made in the USA/Steel
3004-US	1 1/2"	Made in the USA/Steel
3005-US	2"	Made in the USA/Steel

3000	1/2"	Malleable Iron
3001	3/4"	Malleable Iron
3002	1"	Malleable Iron
3003	1 1/4"	Malleable Iron
3004	1 1/2"	Malleable Iron
3005	2"	Malleable Iron
3006	2 1/2"	Malleable Iron
3007	3"	Malleable Iron
3008	3 1/2"	Malleable Iron
3009	4"	Malleable Iron

Set Screw Couplings

 File No. E24001*: 3600 thru 3605; 246 thru 249; 246-DC thru 249-DC

 File No. E9391: 3600-US thru 3605-US

 File No. LR39354: 246-DC thru 249-DC

Catalog Number	Trade Size	Material
40-DC	1/2"	Zinc Die Cast
41-DC	3/4"	Zinc Die Cast
42-DC	1"	Zinc Die Cast
246-DC	2 1/2"	Zinc Die Cast
247-DC	3"	Zinc Die Cast
248-DC	3 1/2"	Zinc Die Cast
249-DC	4"	Zinc Die Cast

246	2 1/2"	Steel
247	3"	Steel
248	3 1/2"	Steel
249	4"	Steel