



Zinc Die Cast Compression Couplings

Used to join two lengths of EMT. 2 1/2" and larger are suitable for aluminum or steel EMT and rigid.

File No. E24001 File No. LR39354

CATALOG #	TRADE SIZE
260-DC	1/2"
261-DC	3/4"
262-DC	1"
263-DC	1 1/4"
264-DC	1 1/2"
265-DC	2"
266-DC	2 1/2"
267-DC	3"
268-DC	3 1/2"
269-DC	4"

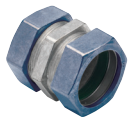


Steel Compression Couplings

Used to join two lengths of EMT.

File No. E24001

CATALOG #	TRADE SIZE
260-US	1/2"
261-US	3/4"
262-US	1"
263-US	1 1/4"
264-US	1 1/2"
265-US	2"
266-US	2 1/2"
267-US	3"
268-US	3 1/2"
269-US	4"



Zinc Die Cast Raintight Compression Couplings

Compression style coupling used to join two lengths of EMT. Internal sealing ring creates a raintight seal. Patented.

File No. E24001

CATALOG #	TRADE SIZE
260-RTUS	1/2"
261-RTUS	3/4"
262-RT	1"
263-RT	1 1/4"
264-RT	1 1/2"
265-RT	2"
266-RT	2 1/2"
267-RT	3"
268-RT*	3 1/2"
269-RT*	4"

* Consult factory for availability



Quick Install EMT Connectors

Quickly joins EMT to box or enclosure without the use of a locknut.

Simply:

- Insert fitting into the locknut
- Insert EMT into the fitting
- Tighten the set screw to simultaneously secure the EMT and the fitting into the knockout.

File No. E24001

Insulated Throat - 105°C

CATALOG #	TRADE SIZE
1701-DCI	1/2"
1702-DCI	3/4"