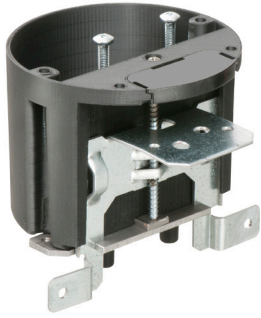


Adjustable IN/OUT BOX™ for Fan/Fixtures



Non-metallic. Preset for 1/2" ceiling, adjusts up to 1-1/2" to accommodate varying ceiling thicknesses, like single or double drywall.

FEATURES AND BENEFITS

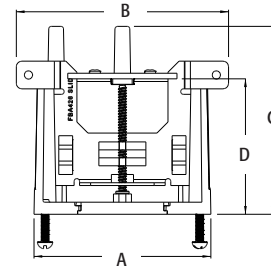
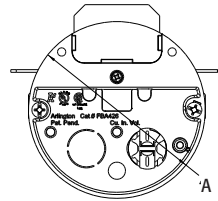
- Always accessible depth adjustment screw allows depth adjustment *before or after* ceiling is in place
- Mounts securely to joist in new construction
- Listed for fixture support up to 50lbs
- 2-hour fire rating

| CATALOG NUMBER | UPC/DCI/NAED MFG #018997 | DESCRIPTION / STYLE | UNIT PKG | STD PKG | DIM A | DIM B | DIM C | DIM D |
|----------------|--------------------------|---|----------|---------|-------|-------|-------|-------|
| FBA426 | 02575 | For 1/2" or 1-1/2" drywall 21.0 cu. in. | 25 | 25 | 4.000 | 4.800 | 4.252 | 3.065 |

Note: Complies with 2017 NEC, 314.20 for set back boxes.
PATENTED.



Scan For Video



INSTALLATION INSTRUCTIONS



1 Install FBA426 onto joist with (4) screws: (2) through support tabs A and B, and (2) more through the front flange.



2 Slide plastic insert into box.



3 Pull NM cable through installed NM connector.



4 Cutaway: Box set back in double drywall ceiling.



5 After installation of wall board, use the depth adjustment screw to adjust position of the box, if necessary.



6 Box flush with ceiling. Remove captive installation screws and install bracket.

FAN/FIXTURE BOX RATING AND NUMBER OF SINGLE CONDUCTORS

| CATALOG NUMBER | CUBIC INCHES | UL FAN LOAD RATING (LBS.) | CSA FAN LOAD RATING (LBS.) | UL FIXTURE STATIC RATING (LBS.) | CSA FIXTURE STATIC RATING (LBS.) | # OF SINGLE CONDUCTORS | | |
|----------------|--------------|--------------------------------|----------------------------|---------------------------------|----------------------------------|------------------------|-----|-----|
| | | | | | | #14 | #12 | #10 |
| F426 | 28.0 | - | - | 50 | 50 | - | - | - |
| F426F | 28.0 | - | - | 50 | 50 | - | - | - |
| FA426 | 20.7 | - | - | 50 | 50 | - | - | - |
| FB405 | 6.0 | 70 | 50 | 200 | 50 | 3 | - | - |
| FB4050 | 6.0 | 70 | 50 | 200 | 50 | 3 | - | - |
| FB407 | 8.0 | 70 | 50 | 200 | 50 | 4 | 3 | 3 |
| FB4070 | 8.0 | 70 | 50 | 200 | 50 | 4 | 3 | 3 |
| FB412 | 14.4 | 70 | 50 | 200 | 50 | 7 | 6 | 5 |
| FB415 | 10.3 | 70 | 50 | 200 | 50 | 5 | 4 | 4 |
| FB4150 | 10.3 | 70 | 50 | 200 | 50 | 5 | 4 | 4 |
| FB417S | 20.0 | 70 | 50 | 70 | 50 | 10 | 8 | 8 |
| FB417SLP | 20.0 | 70 | 50 | 70 | 50 | 10 | 8 | 8 |
| FB423 | 19.5 | 70 | 50 | 200 | 50 | 9 | 8 | 7 |
| FB426 | 16.0 | 70 | 50 | 200 | 50 | 8 | 7 | 6 |
| FB426F | 16.0 | 70 | 50 | 200 | 50 | 8 | 7 | 6 |
| F428SC | 28.0 | - | - | 50 | - | - | - | - |
| FB428SC | 28.0 | 70 | - | 70 | - | - | - | - |
| FB442 | 13.4 | 70 | 50 | 200 | 50 | 6 | 4 | 4 |
| FB442F | 15.5 | 70 | 50* | 200 | 50* | - | - | - |
| FB442FD | 25.0 | 70 | 50* | 200 | 50* | - | - | - |
| FB443 | 18.3 | 70 | 50 | 200 | 50 | 8 | 7 | 7 |
| FB443F | 18.8 | 70 | 50* | 200 | 50* | - | - | - |
| FB443FD | 28.5 | 70 | 50* | 200 | 50* | - | - | - |
| FB444 | 25.6 | 70 | 50 | 200 | 50 | 13 | 11 | 10 |
| FB450 | 14.5 | 70 | 50 | 200 | 50 | 7 | 6 | 5 |
| FB900 | 14.5 | 70 | 50 | 200 | 50 | 7 | 6 | 5 |
| FBA426 | 21.0 | 70 | 50 | 100 | 50 | - | - | - |
| FBB450 | 14.5 | 70 | 50 | 200 | 50 | - | - | - |
| FBB900 | 14.5 | 70 | 50 | 200 | 50 | - | - | - |
| FBC4225BR | 21.0 | 70 | 70 | 70 | 70 | - | - | - |
| FBC4225W | 21.0 | 70 | 70 | 70 | 70 | - | - | - |
| FBC42251BR | 21.8 | 70 | - | 70 | - | - | - | - |
| FBC42251W | 21.8 | 70 | - | 70 | - | - | - | - |
| FBC42251GY | 21.8 | 70 | - | 70 | - | - | - | - |
| FBR415F | 18.3 | 70 | 50* | 90 @ 24" o.c. 150 @ 16" o.c. | 50* | - | - | - |
| FBR423 | 23.0 | 70 @ 24" o.c. 70 @ 16" o.c. | 50 | 90 @ 24" o.c. 150 @ 16" o.c. | 50 | - | - | - |
| FBR425F | 27.3 | 70 | 50* | 200 | 50* | - | - | - |
| FBRS407R | 8.0 | 35 | 50 | 50 | 50 | 4 | 3 | 3 |
| FBRS40712R | 8.0 | 35 | 50 | 50 | 50 | 4 | 3 | 3 |
| FBRS415 | 15.6 | 70 @ 24" o.c. 70 @ 16" o.c. | 50 | 90 @ 24" o.c. 150 @ 16" o.c. | 50 | 7 | 6 | 6 |



(continued on next page)