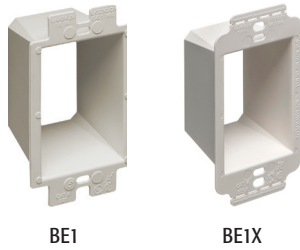
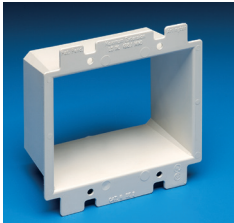


Box Extenders

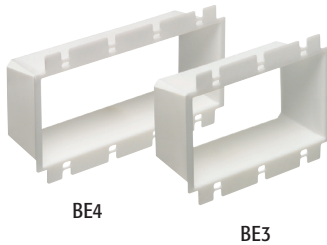


BE1

BE1X



BE2



BE4

BE3

Levels and supports the wiring device where the box is set back from the wall surface. Extends the box up to 1-1/2".

FEATURES AND BENEFITS

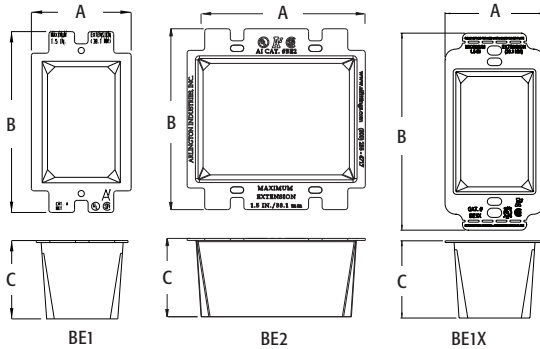
- Allows the contractor to comply with 2014 NEC Article 314.20
- Levels and supports the wiring device where the box is set back from the wall surface (adjusts up to a 1-1/2" box extension)
- Works in handy boxes and 4" square electrical boxes with plaster rings for single switches or receptacle
- Functions with all standard devices, switches, and GFCIs
- Manufactured from 105°C continuous use 94V0 rated flame retardant plastic for safer installations

CATALOG NUMBER	UPC/DCI/NAED MFG #018997	DESCRIPTION	UNIT PKG	STD PKG	DIM A	DIM B	DIM C
BE1	40160	Single-gang	25	250	2.313	4.188	1.813
BE1X	40171	Single-gang w/ larger flange <i>Better device support in oversized or miscut wall openings.</i>	25	25	2.325	4.628	1.813
BE1BAG	51905	Single-gang	1	100	2.313	4.188	1.813
BE2	48960	Two-gang	25	25	4.100	4.188	1.813
BE3	48967	Three-gang	10	10	5.937	4.188	1.813
BE4	48968	Four-gang	10	10	7.749	4.188	1.813

BE1BAG includes two #6 x 2" long screws.
PATENTED.

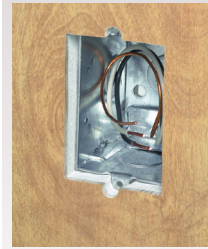


HEAVY-DUTY PLASTIC
UL Listed!



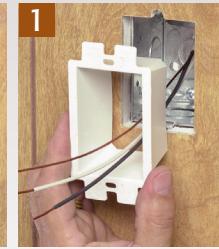
INSTALLATION INSTRUCTIONS

PROBLEM...



Electrical box set back from wall surface.

SOLUTION...



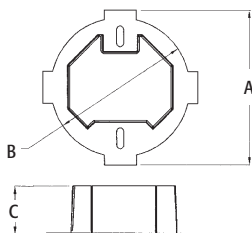
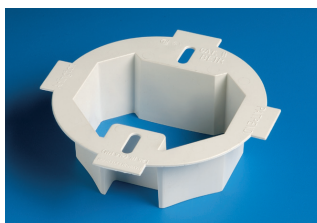
1 Pull wires through. Press the BE1 firmly into the electrical box.



2 Attach wires to receptacle. Tighten screws for a level, fully supported, code compliant installation.

Note: To install without removing device wires, tilt the device through the BE1 at a slight angle, straighten it and tighten the screws!

Ceiling Box Extender



For set back ceiling boxes. Fits 3-1/2" and 4" round or octagonal boxes.

FEATURES AND BENEFITS

- Complies with 2014 NEC Article 314.20
- Extends box up to 1-1/2" to bring it level with ceiling surface
- Trims to accommodate shallow boxes or to avoid obstructions
- Manufactured from 105°C continuous use 94V0 rated flame retardant plastic for safer installations

CATALOG NUMBER	UPC/DCI/NAED MFG #018997	UNIT PKG	STD PKG	DIM A	DIM B	DIM C
BE1R	40161	25	25	4.850	4.350	1.500

PATENTED.

