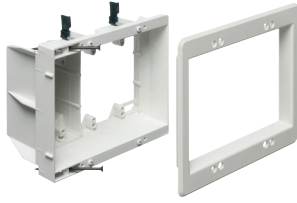


Multiple Gang Recessed TV BOX™ for Power and Low Voltage

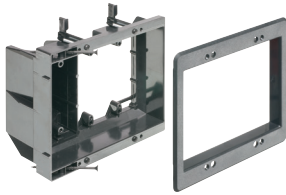
For new or existing construction. Non-metallic, recessed combo boxes for power and low voltage for class 2 wiring of satellite or cable TV, speakers, etc.

FEATURES AND BENEFITS

- Recessed combo box allows you to mount LCD/plasma TVs and other system components flush against the wall
- For new work... Use supplied screws to install on stud. For convenience, box positioning tabs are set for 1/2" or 5/8" drywall
- Trim plate is textured/paintable and covers edges of cut wall surface
- Mounting wings hold bracket securely against wall when screws are tightened
- For walls up to 1-1/2" thick
- Use with Arlington's SCOOP™ series entrance hoods and plates (see pages O-7 to O-9)



TVBU507



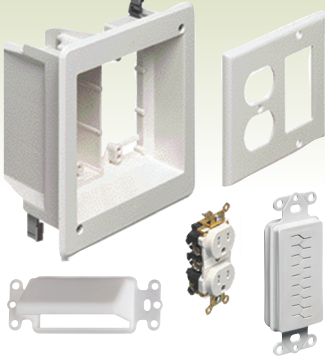
TVBU507BL

Includes...

Recessed combo box; (1) trim plate; (1) decorator style cover plate; and installation screws.

TVBR505K Kit

Includes: Recessed combo box; (1) tamper-resistant duplex receptacle; (1) CEDH1 & (1) CED130; and (1) wall plate.



CATALOG NUMBER	UPC/DCI/NAED MFG #018997	DESCRIPTION	UNIT PKG	STD PKG	DIM A	DIM B	DIM C
TVBU505*	09680	2-Gang, White, (1) Power/ (1) LV	1	4	6.942	6.254	3.750
TVBU505BL*	09681	2-Gang, Black, (1) Power/ (1) LV	1	4	6.942	6.254	3.750
TVBU505K*†	09682	Kit, 2-Gang, White, (1) Power/ (1) LV	1	4	6.942	6.254	3.750
TVBR505K*	09670	Kit, 2-Gang, White, (1) Power/ (1) LV	1	4	6.942	6.254	3.750
TVBU507	09661	3-Gang, White, (1) Power/ (2) LV	1	4	7.930	6.818	3.875
TVBU507BL	09662	3-Gang, Black, (1) Power/ (2) LV	1	4	7.930	6.818	3.875

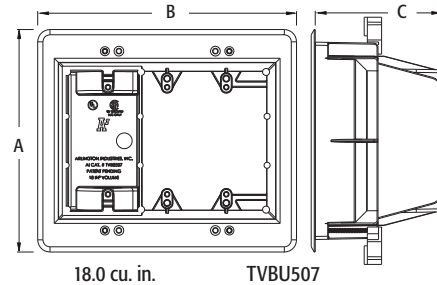
Add suffix "GC" to Catalog # when ordering in Canada to include grounding clip, for example TVBU505GC.

*Optional box covers available on page Q-3.

† Includes brush-style cable entry device.

PATENTED.

Scan For Video



INSTALLATION INSTRUCTIONS

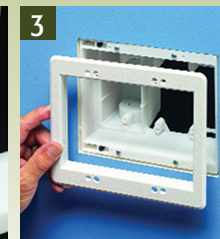
NEW WORK (TVBU507 SHOWN)



Attach box to stud. Use tabs for proper positioning of box depth. See 2.



Positioning tabs are set for 1/2" or 5/8" drywall.

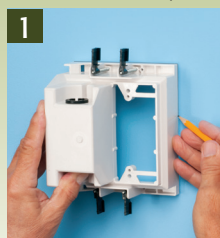


Attach paintable trim plate with screws provided. See Photo B.



Tighten mounting wing screws to pull the box securely against the wall board. See Photo B.

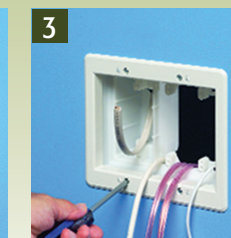
RETROFIT WORK (TVBU507 SHOWN)



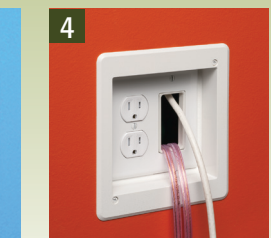
Using box, without trim plate as a template, mark location. Cut hole.



Attach trim plate to box. See Photo B. Pull wire/cables. Install box assembly in opening.



Tighten mounting wing screws to pull the box securely against the wall board. See Photo B.



TVBU505 with power in one side; low voltage in the other. CED13 (page O-6) used to secure wall plate to box.

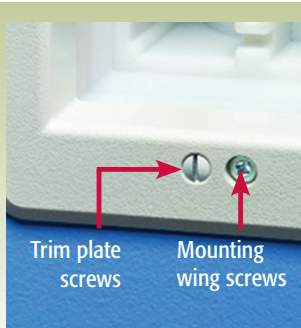


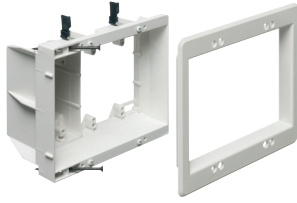
Photo B - Screws

Multiple Gang Recessed TV BOX™ for Power and Low Voltage

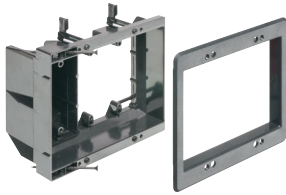
For new or existing construction. Non-metallic, recessed combo boxes for power and low voltage for class 2 wiring of satellite or cable TV, speakers, etc.

FEATURES AND BENEFITS

- Recessed combo box allows you to mount LCD/plasma TVs and other system components flush against the wall
- For new work... Use supplied screws to install on stud. For convenience, box positioning tabs are set for 1/2" or 5/8" drywall
- Trim plate is textured/paintable and covers edges of cut wall surface
- Mounting wings hold bracket securely against wall when screws are tightened
- For walls up to 1-1/2" thick
- Use with Arlington's SCOOP™ series entrance hoods and plates (see pages O-7 to O-9)



TVBU507



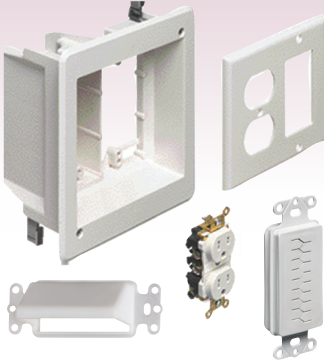
TVBU507BL

Includes...

Recessed combo box; (1) trim plate; (1) decorator style cover plate; and installation screws.

TVBR505K Kit

Includes: Recessed combo box; (1) tamper-resistant duplex receptacle; (1) CEDH1 & (1) CED130; and (1) wall plate.



CATALOG NUMBER	UPC/DCI/NAED MFG #018997	DESCRIPTION	UNIT PKG	STD PKG	DIM A	DIM B	DIM C
TVBU505*	09680	2-Gang, White, (1) Power/ (1) LV	1	4	6.942	6.254	3.750
TVBU505BL*	09681	2-Gang, Black, (1) Power/ (1) LV	1	4	6.942	6.254	3.750
TVBU505K*†	09682	Kit, 2-Gang, White, (1) Power/ (1) LV	1	4	6.942	6.254	3.750
TVBR505K*	09670	Kit, 2-Gang, White, (1) Power/ (1) LV	1	4	6.942	6.254	3.750
TVBU507	09661	3-Gang, White, (1) Power/ (2) LV	1	4	7.930	6.818	3.875
TVBU507BL	09662	3-Gang, Black, (1) Power/ (2) LV	1	4	7.930	6.818	3.875

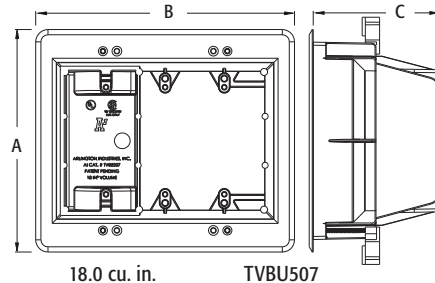
Add suffix "GC" to Catalog # when ordering in Canada to include grounding clip, for example TVBU505GC.

*Optional box covers available on page Q-3.

† Includes brush-style cable entry device.

PATENTED.

Scan For Video



E170558 LR49636

INSTALLATION INSTRUCTIONS

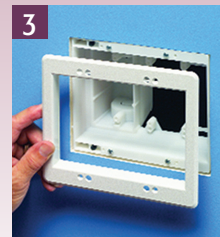
NEW WORK (TVBU507 SHOWN)



Attach box to stud. Use tabs for proper positioning of box depth. See **Photo 2**.



Positioning tabs are set for 1/2" or 5/8" drywall.



Attach paintable trim plate with screws provided. See **Photo B**.



Tighten mounting wing screws to pull the box securely against the wall board. See **Photo B**.

RETROFIT WORK (TVBU507 SHOWN)

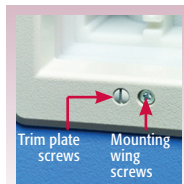
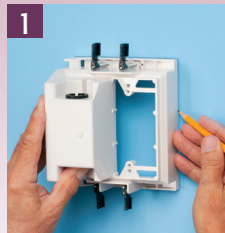


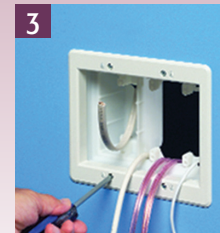
Photo B - Screws



Using box, without trim plate as a template, mark location. Cut hole.



Attach trim plate to box. See **Photo B**. Pull wire/cables. Install box assembly in opening.



Tighten mounting wing screws to pull the box securely against the wall board. See **Photo B**.



TVBU505 with power in one side; low voltage in the other. CED13 (page O-6) used to secure wall plate to box.