

Weatherproof FS Boxes



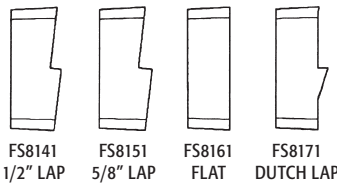
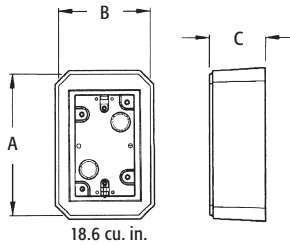
One-piece construction electrical box provides a clean, weatherproof, UL Listed installation. Deep design for GFCIs. Paintable, UV rated plastic for long outdoor life.

FEATURES AND BENEFITS

- Provides a solid, attractive, UL listed installation
- Accommodates GFCI, switches, and outlets
- For use with all siding types... 1/2", 5/8", Dutch Lap, and flat surfaces

CATALOG NUMBER	UPC/DCI/NAED MFG #018997	SIDING TYPE/STYLE	UNIT PKG	STD PKG	DIM A	DIM B	DIM C
FS8141	17340	1/2" Lap	25	25	5.093	3.312	2.056
FS8151	17341	5/8" Lap	25	25	5.093	3.312	2.056
FS8161	17342	Flat Surfaces	25	25	5.093	3.312	2.056
FS8171	17343	Dutch Lap	25	25	5.093	3.312	2.056

Add suffix "GC" to Catalog # when ordering in Canada to include grounding clip, for example FS8141GC. **PATENTED.**



INSTALLATION INSTRUCTIONS



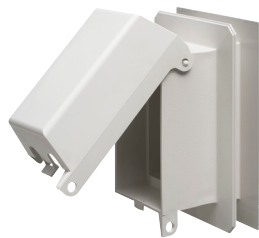
Remove KO from FS Box & insert NM cable connector. Push cable through connector & position box onto siding.



Mount box to siding and install your choice of either a GFCI, switch or duplex receptacle.

Complete installation with one of Arlington's code required extra-duty weatherproof while-in-use 60 Series or 61 Series Low Profile IN-AND-OUT™ covers. See Page K-16 for more information.

One-Piece Weatherproof Outlet Box for Siding



F8091V

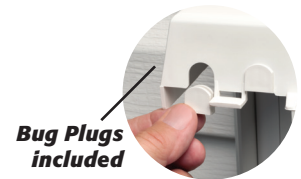


F8091HC

One-piece outlet box for siding has an installed extra-duty weatherproof cover. For single-gang devices including GFCIs.

FEATURES AND BENEFITS

- Lockable
- Vertical or horizontal
- Clear or white Extra-Duty covers
- For single gang devices including GFCIs



Bug Plugs included

CATALOG NUMBER	UPC/DCI/NAED MFG #018997	DESCRIPTION	UNIT PKG	STD PKG	DIM A	DIM B	DIM C
F8091V	22006	Vertical/White Cover	1	4	4.990	7.248	4.987
F8091VC	22008	Vertical/Clear Cover	1	4	4.990	7.248	4.987
F8091H	22002	Horizontal/White Cover	1	4	7.248	4.990	4.987
F8091HC	22045	Horizontal/Clear Cover	1	4	7.248	4.990	4.987

Add suffix "GC" to Catalog # when ordering in Canada to include grounding clip, for example F8091VGC. Note: Meets 2014 NEC Section 406.9; for the protection of exterior outlets which require the use of an extra-duty weatherproof while-in-use cover for all outdoor 15 or 20 AMP receptacles.

PATENTED. OTHER PATENTS PENDING.

WEATHERPROOF-IN-USE

EXTRA-DUTY

