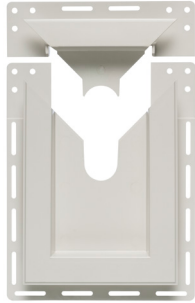


Hose Bib



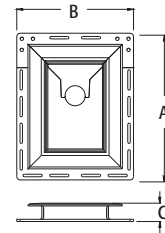
Two-piece non-metallic hose bib for all siding types.

FEATURES AND BENEFITS

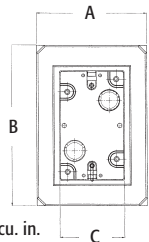
- Built-in J channel
- Installs before the siding is installed
- Paintable
- Easy to install slip-fit design.
- Fits most standard and frost-free 3/4" hose bibs.

CATALOG NUMBER	UPC/DCI/NAED MFG #018997	DESCRIPTION	UNIT PKG	STD PKG	DIM A	DIM B	DIM C
HB1	15300	2-piece, Non-Metallic for all siding types	1	10	8.251	6.562	1.031

PATENT PENDING.



Weatherproof FS Outlet Box



For installing devices on all siding types.
Paintable, UV rated plastic for long outdoor life.

FEATURES AND BENEFITS

- Installs before or after siding is installed. Remove break-away flanges for installation on previously sided structures.
- Costs less...one-piece design
- For use with all single-gang devices, including GFCIs
- Can be installed vertically or horizontally
- For all types of siding
- Textured, paintable surface.
- UL listed

COSTS LESS
Than Our
8081F and 8091F
Siding Boxes.

CATALOG NUMBER	UPC/DCI/NAED MFG #018997	SIDING TYPE	UNIT PKG	STD PKG	DIM A	DIM B	DIM C
FS8091F	17304	All Types	10	10	4.511	6.558	2.656

Add suffix "GC" to Catalog # when ordering in Canada to include grounding clip, for example FS8091FGC.

PATENTED.

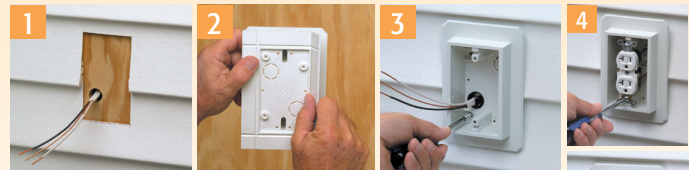


INSTALLATION INSTRUCTIONS



BEFORE Siding is Up

1. Disconnect electrical power. Remove knockout. Insert cable connector. Pull NM cable through connector.
2. Attach outlet box to substrate with (2) screws.
3. Install device, FS8091F works with all single gang devices. Complete installation with code required weatherproof while-in-use cover.



AFTER Siding is Up

1. Disconnect electrical power. Cut hole in siding.
2. Break flanges off the back of the FS8091F. Remove knockout. Insert cable connector in KO,
3. Attach outlet box to substrate with (2) screws.
4. Install single gang device (standard or GFCI). Complete installation with code required weatherproof while-in-use cover