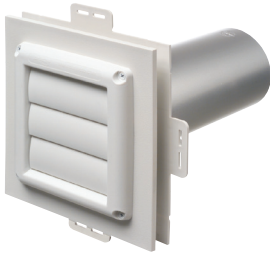


Dryer Vent Mounting Block Kit



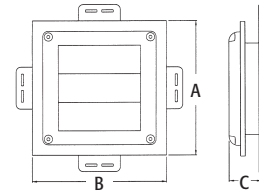
Non-metallic dryer vent mounting block for new construction.

FEATURES AND BENEFITS

- Provides a secure, attractive and time saving way to install dryer vents on new siding
- Installs before siding is up and fits 1/2" and 5/8" step, and Dutch Lap siding
- Textured, paintable surface
- Overhang covers cut ends of siding for a clean, neat look
- Easy to install—provides an attractive, flush-look mounting
- UV rated plastic for long outdoor life

CATALOG NUMBER	UPC/DCI/NAED MFG #018997	SIDING TYPE	UNIT PKG	STD PKG	DIM A	DIM B	DIM C
DV1	43607	All Types	1	1	7.226	7.226	1.738

Kit includes a low profile, louver-type hood; a snap together 4" diameter x 11" aluminum tube; and a siding block with built-in J-channel.



Siding Mounting Block



Mounting block with built-in electrical box for smooth vertical mounting of light fixtures on all siding types. Paintable. UV rated plastic for long outdoor life.

FEATURES AND BENEFITS

- Installs before or after siding is installed. Remove break-away flanges for installation on previously sided structures.
- One-piece design
- Textured, paintable surface
- NM cable connector included

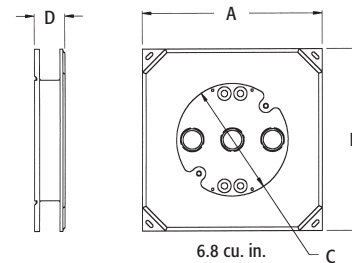
CATALOG NUMBER	UPC/DCI/NAED MFG #018997	SIDING TYPE	UNIT PKG	STD PKG	DIM A	DIM B	DIM C	DIM D
8141F	10761	All Types	10	10	6.652	6.652	4.125" Diameter x 1/2" Deep	1.126

Add suffix "GC" to Catalog # when ordering in Canada to include grounding clip, for example 8141FGC.

PATENTED.



**Easy to Install
Before or After
the Siding!**



INSTALLATION INSTRUCTIONS

BEFORE siding is up...

1. Remove knockout from 8141F. Insert cable connector. Pull NM cable through connector.
2. Attach block to substrate with (2) screws mounted diagonally.
3. Install fixture according to manufacturer's instructions.

AFTER siding is up...

1. Cut hole in siding.
2. Break flanges off the back of the 8141F. Remove knockout. Insert cable connector in KO, then pull NM cable through connector.
3. Attach mounting block to substrate with (2) screws.
4. Install fixture according to manufacturer's instructions.