

Mega Siding Plate



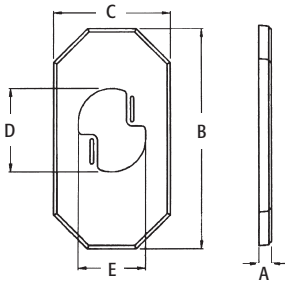
Use the 8100LP to convert octagonal size covers to MEGA covers for mounting large fixtures or coach lamps. UV rated plastic for long outdoor life.

FEATURES AND BENEFITS

- Accommodates light fixtures with mounting brackets up to 12"
- To center fixtures, use slotted mounting screw holes to provide adjustments up to 1"
- Provides a smooth, secure mounting surface for large fixtures
- Instantly converts a previously installed octagonal siding block to a Mega Siding Plate
- Features alignment mounting slots to guarantee the Mega Siding Plate will stay securely in position

CATALOG NUMBER	UPC/DCI/NAED MFG #018997	SIDING TYPE	UNIT PKG	STD PKG	DIM A	DIM B	DIM C	DIM D	DIM E
8100LP	10749	All Types	1	10	.783	13.500	7.125	5.125	4.105

PATENTED.



INSTALLATION INSTRUCTIONS

The 8100LP MEGA Siding Plate is designed to install directly over the existing mounting block for installations of large light fixtures. If screw holes are offset, simply rotate the 8100LP 180°.

For use with Arlington's Siding Blocks

- 8131
- 8141
- 8141DBL
- 8151
- 8161
- 8171



Super MEGA Siding Plate



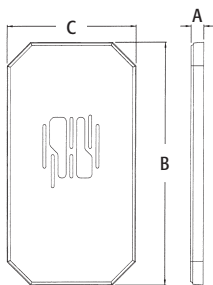
Converts existing octagonal block for installation of extra large light fixtures or coach lamps. Paintable, UV rated plastic for long outdoor life.

FEATURES AND BENEFITS

- Supports light fixtures with canopies up to 8" wide x 15-1/2" tall
- To center fixtures, use slotted mounting screw holes to provide adjustments up to 2"
- Fits over all Arlington's octagonal siding blocks and 8091F
- Provides a sturdy, extra large mounting surface

CATALOG NUMBER	UPC/DCI/NAED MFG #018997	SIDING TYPE	UNIT PKG	STD PKG	DIM A	DIM B	DIM C
8100MLP	10752	All Types	1	10	.838	16.000	8.500

PATENTED.



INSTALLATION INSTRUCTIONS

Use with an existing mounting block. Disconnect electrical power. Align slots and secure the 8100MLP to the siding block. Install extra large fixture per manufacturer's instructions. If screw holes are offset, simply rotate the 8100MLP 180°.

For use with Arlington's Siding Blocks

- 8091F
- 8131
- 8141
- 8141DBL
- 8151
- 8161
- 8171

