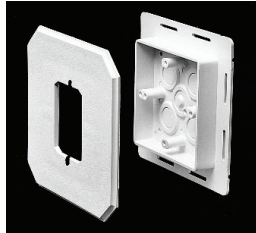


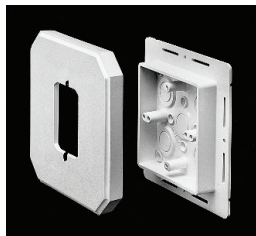
Siding Box Kits



8081



8081F



8082F (for 1/2" or less)



8081FC



8081FB

For smooth vertical mounting of fixtures and receptacles on sided structures. Paintable. UV rated plastic for long outdoor life.

FEATURES AND BENEFITS

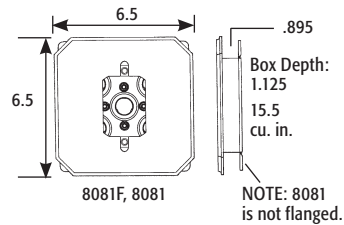
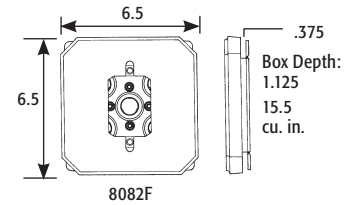
- UL Listed electrical box
- Works on all siding types—Before or After the siding is up!
- Flanges may be removed for retrofit work
- Textured, paintable surface
- NM cable connector included

CATALOG NUMBER	UPC/DCI/NAED MFG #018997	SIDING TYPE	USES	UNIT PKG	STD PKG	STYLE
8081*	80812	All Types	Fixtures/Devices	25	25	w/o Flange
8081F*†	80814	All Types	Fixtures/Devices	25	25	w/ Flange
8082F*	32240	1/2" or Less	Fixtures/Devices	25	25	w/ Flange
8081FC	10939	All Types	Fixtures/Devices	25	25	Cover Only
8081FB*†	10941	All Types	Fixtures/Devices	25	25	Box Only

*Add suffix "GC" to Catalog # when ordering in Canada to include grounding clip, for example 8081FGC.
† For Larger fixture mount see 8081FDBLC on pg L-3.



For Installation Instructions 'AFTER Siding is Up' see below. For Installation Instructions 'BEFORE Siding is Up' see page L-2.



INSTALLATION INSTRUCTIONS

AFTER Siding is Up...

Without Flange (8081 & 8081DBL)

NOTE: 8081F, 8081FDBL, 8082F, 8091F, and 8091FDBL may also be installed when siding is already up. Score and break off flanges before step one (below).



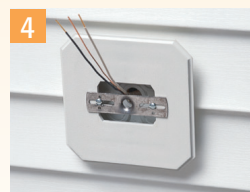
Disconnect electrical power. Place box section in desired location and pencil outline onto siding.



Cut along pencil line with razor knife and remove vinyl siding.



Mount box section to substrate. Caulk as required.



Place siding block over box section (8081 shown).



Connect wires and install fixture per manufacturer's instructions.