

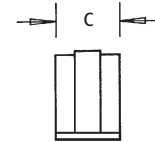
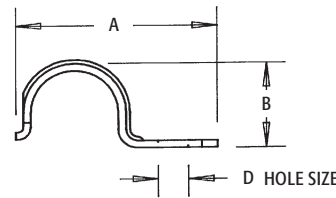
Heavy-Duty 1-Hole EMT Straps

EMT



Plated steel, click-on.

CATALOG NUMBER	UPC/DCI/NAED MFG #018997	EMT SIZE	UNIT PKG	STD PKG	DIM A	DIM B	DIM C	DIM D
370	00370	1/2	100	1000	1.700	.700	.562	.250
371	00371	3/4	100	1000	1.935	.975	.625	.250
372	00372	1	50	500	2.210	2.210	.750	.312
373	00373	1-1/4	25	250	2.800	2.800	.875	.375
374	00374	1-1/2	25	100	3.140	3.140	1.000	.375
375	00375	2	25	100	3.890	3.890	1.125	.437
346	00346	2-1/2	25	25	4.927	4.927	1.250	.562
347	00347	3	25	25	5.560	5.560	1.250	.562
348	00348	3-1/2	10	10	6.337	6.337	1.250	.562
349	00349	4	10	10	6.811	6.811	1.250	.562

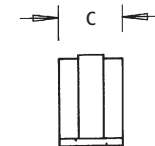
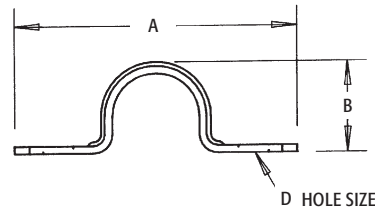


2-Hole EMT Straps

Plated steel, click-on.



CATALOG NUMBER	UPC/DCI/NAED MFG #018997	EMT SIZE	UNIT PKG	STD PKG	DIM A	DIM B	DIM C	DIM D
360	00360	1/2	100	1000	2.200	.790	.562	.187
361	00361	3/4	50	500	2.700	.980	.625	.187
362	00362	1	50	250	2.975	1.185	.688	.187
363	00363	1-1/4	50	250	3.650	1.535	.750	.253
364	00364	1-1/2	25	250	4.250	1.670	.875	.253
365	00365	2	25	250	4.775	2.300	1.000	.375
356	00356	2-1/2	25	100	5.850	2.855	1.000	.375
357	00357	3	25	25	6.460	3.425	1.000	.375
358	00358	3-1/2	10	10	7.300	3.925	1.000	.375
359	00359	4	10	10	7.895	4.390	1.000	.375

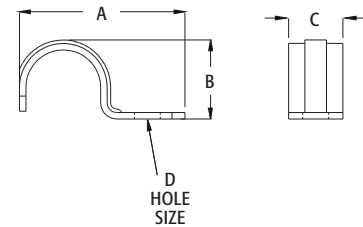


1-Hole Rigid Straps



Snap-on type. Plated steel.

CATALOG NUMBER	UPC/DCI/NAED MFG #018997	TRADE SIZE	UNIT PKG	STD PKG	DIM A	DIM B	DIM C	DIM D
340	00340	1/2	50	500	1.915	.875	.625	.250
341	00341	3/4	50	500	2.230	1.050	.750	.250
342	00342	1	25	250	2.615	1.295	.875	.312
343	00343	1-1/4	25	100	2.975	1.630	.875	.375
344	00344	1-1/2	25	100	3.660	1.860	1.000	.437
345	00345	2	25	100	4.150	2.240	1.125	.562
346	00346	2-1/2	25	25	4.927	2.958	1.245	.550
347	00347	3	25	25	5.560	3.441	1.250	.550
348	00348	3-1/2	10	10	6.337	3.951	1.250	.575
349	00349	4	10	10	6.811	4.441	1.240	.575



2-Hole Rigid Straps



Snap-on type. Plated steel.

CATALOG NUMBER	UPC/DCI/NAED MFG #018997	TRADE SIZE	UNIT PKG	STD PKG	DIM A	DIM B	DIM C	DIM D
350	00350	1/2	50	500	2.440	.900	.620	.200
351	00351	3/4	50	500	2.810	1.060	.690	.200
352	00352	1	25	250	3.350	1.365	.750	.275
353	00353	1-1/4	25	100	4.110	1.700	.865	.275
354	00354	1-1/2	25	100	4.450	1.960	.940	.275
355	00355	2	25	150	5.350	2.240	.995	.325
356	00356	2-1/2	25	25	6.025	2.855	.985	.345
357	00357	3	25	25	6.460	3.425	.995	.345
358	00358	3-1/2	10	10	7.300	3.925	.990	.345
359	00359	4	10	10	7.895	4.435	.995	.345

