

Fan & Fixture Mounting Boxes

Our lowest cost L-shaped fan/fixture boxes mount securely to single or double joists with a shipped-in-place center screw.

Locator posts for positioning of bracket installation screws



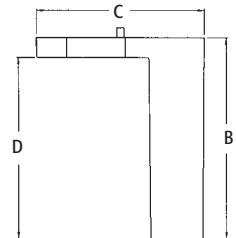
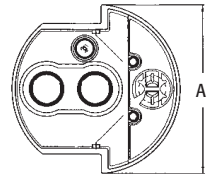
CATALOG NUMBER	UPC/DCI/NAED MFG #018997	DESCRIPTION / STYLE	UNIT PKG	STD PKG	DIM A	DIM B	DIM C	DIM D
FB442	72194	For 1/2" or 5/8" Drywall 13.4 Cu. In.	25	25	4.236	3.773	4.250	3.273
FB443	72197	For 1/2" or 5/8" Drywall 18.3 Cu. In.	25	25	4.236	5.071	4.250	4.571

Refer to chart on page R-18 for load ratings and number of single conductors.

PATENTED.



TWO HOUR FIRE RATING



Each fan/fixture box includes...

A ready-to-tighten center screw, installed NM cable connector, mud cover, multiple KOs, and two screws for fan/fixture bracket installation (screwed in place until removed by installer).

FEATURES AND BENEFITS

- No loose parts to misplace – totally self-contained!
- Locator posts assure proper positioning of fan/fixture bracket
- Competitively priced
- Fan/fixture installation screws are **parked**...ready for easy fan/fixture bracket installation!
- UL rated: 70 lb. fan, 200 lb. fixture; CSA rated: 50 lb. fan/fixture

Installation Instructions



1. Position box alongside joist. Tighten center screw, mounting box to joist.



2. Position mounting bracket over locator posts to assure proper position. Pull wires through KO.



3. Remove captive bracket installation screws. Use them to mount fan/fixture bracket. (Installation of drywall not shown.)

Note: Install fan or fixture (not included) in accordance with manufacturer's instructions and all local applicable electrical codes, using the parked screws provided.