

NEW!
more on
reverse

Gangable Plastic Box

Snap Together the Multiple-Gang Box You Need – Fast!



Have This?

TWO-GANG



Need This?

FOUR-GANG

Forget the old, time-consuming way of making a multiple-gang steel box out of several single-gang steel boxes. Arlington's GANGABLE plastic boxes save time and money – you'll save more than 1-1/2 minutes on a four-gang box alone! And they cost less than steel boxes.

Now you can build the box you need – *when you need it* – just by snapping the ends and center section(s) together.

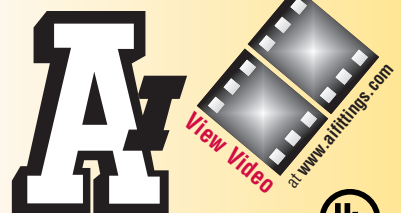
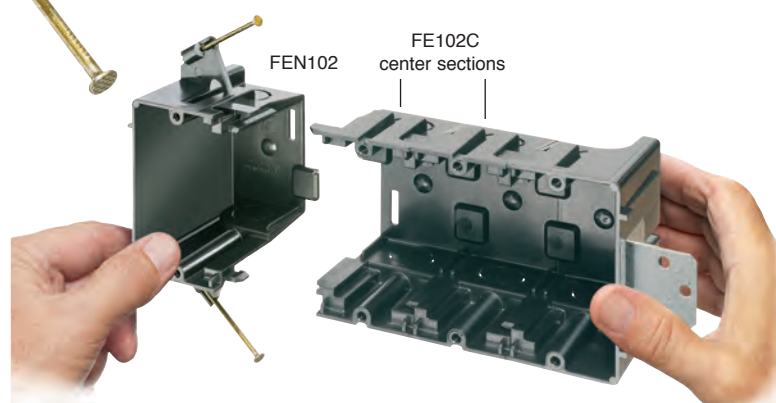
The two-piece, nail-on FEN102 (shown), screw-on FES102 or FER102 for old work, make a two-gang box. But if you need a three-gang to ten-gang box, just add the number of center sections needed to create the new, larger box.

The box mounts on a stud for an extra-secure installation. It also includes an (unassembled) adjustable steel bracket, that mounts to the unsupported side of the box for additional support of a larger box.

- Use a screwdriver to disassemble or separate the parts. Add or remove the center section(s), then snap the pieces back together... fast and easy!
- Great-looking installation of multiple gang boxes
- Nail or screw-on styles for new construction
- For old work, mounting wings hold the box securely against the wall
- UL Listed



NEW!
Easy
Snap-together installation...
NO TOOLS!



Arlington



1 Stauffer Industrial Park
Scranton, PA 18517
800/233.4717
Fax 570/562.0646
www.aifittings.com
www.arlnew.com

Gangable Plastic Box

Build the Box You Need • No Tools! • Saves Time & Money

New Construction - Nail on



FEN102

New Construction - Screw on



FES102, FE102C

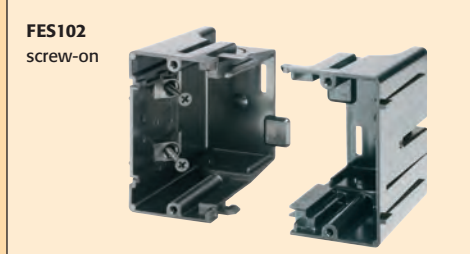
For Old Work

Mounting wing screws hold box securely against the wall



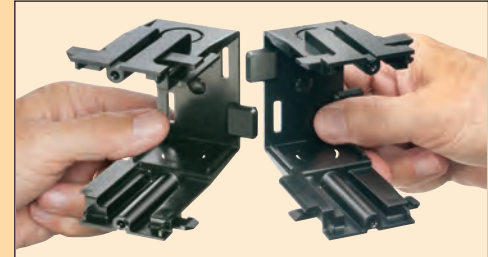
FER102, FE102C

Here's How the Gangable Box Works...

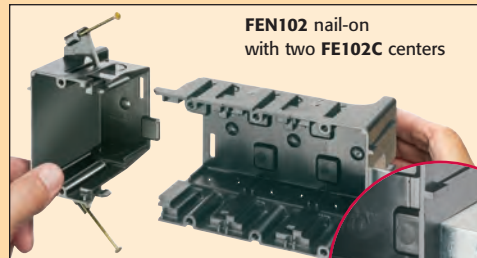


FES102 screw-on

1 Start with a two-gang FEN102, FES102 or FER102. Determine how many gangs you need.

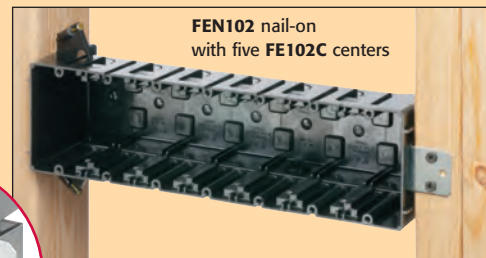


2 Each center section adds one gang to the box. Snap the number of centers necessary to make a new, larger box, from three- to ten-gangs!



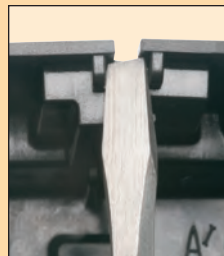
FEN102 nail-on with two FE102C centers

3 Snap the ends of the original two-gang box to each side of the center section assembly.

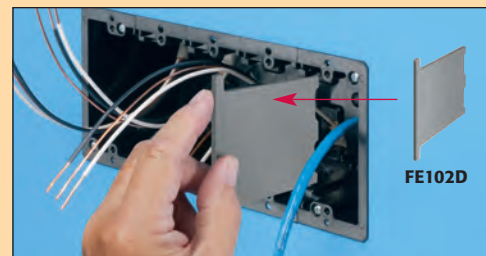


FEN102 nail-on with five FE102C centers

4 For additional support of a larger box, attach the supplied steel bracket to the unsupported side of the box. Attach the bracket to an additional 2x4 as shown.



Note To disassemble or separate the parts, insert a screwdriver between the tabs at the top of the box (on each side) and twist.



FE102D

Use the **OPTIONAL** FE102D voltage divider for power and low voltage in the same box



Arlington

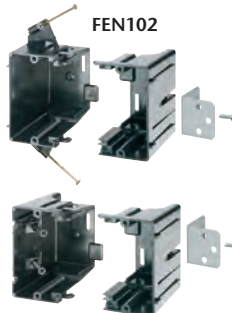
1 Stauffer Industrial Park
Scranton, PA 18517

800/233.4717

Fax 570/562.0646

www.aifittings.com

www.arlnew.com



FEN102



FES102



FE102C



FER102



FE102C

FE102D

Patents pending
FE series 1010/25M

Catalog Number	UPC/DEI/NAED Mfg. #018997	FE Series Gangable Box	Attachment Method /Application	Unit Pkg	Std Pkg
FEN102	01578	Two gang (includes bracket)	Nail-on for New Construction	1	10
FES102	01577	Two gang (includes bracket)	Screw-on for New Construction	1	10
FE102C	01579	Each adds one gang	Center Section for FEN102 and FES102	10	10
FER102	01575	Two-gang	w/ Mounting Wing Screws – Old Work	1	10
FER102C	01576	Each adds one gang	Center Section for Old Work FER102	10	10
FE102D	01586	Voltage Divider	OPTIONAL	25	25

Distributed by