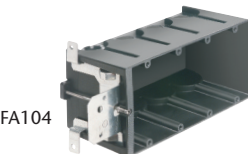
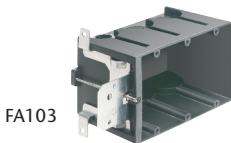
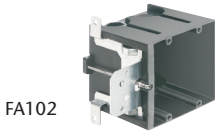
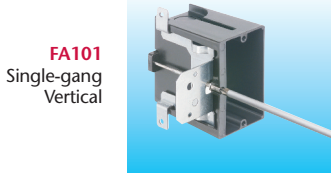
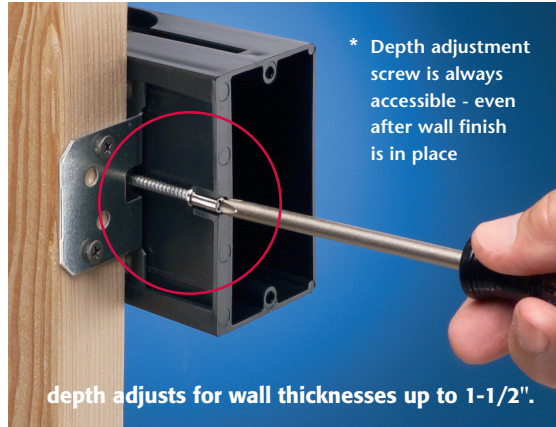


IN/OUT BOX™ Plastic Outlet Boxes

Made in USA 

NEW!
more on reverse

Adjustable PLASTIC Outlet Box for New Construction



Catalog Number	UPC/DEI/NAED Mfg. #018997	Description	Number of Gangs / Cubic Inches	Unit/Std Pkg
FA101*	04241	Non-metallic box w/ depth adjustment up to 1-1/2" (pre-set for 1/2" wall thickness)	Single/Vertical/21.0 cu in	25
FA101H*	11102		Single/Horizontal/21.0 cu in	25
FA102*	04242	Two-gang / 43.5 cu in		10
FA103*	04243	Three-gang / 65.0 cu in		10
FA104	04244	Four-gang / 87.0 cu in		10

with Ground Clip for use in Canada

Catalog Number	UPC/DEI/NAED Mfg. #018997	Description	Number of Gangs / Cubic Inches	Unit/Std Pkg
FA101GC*	76881	Non-metallic box w/ depth adjustment up to 1-1/2" (pre-set for 1/2" wall thickness)	Single/Vertical/21.0 cu in	25
FA101HGC*	11103		Single/Horizontal/21.0 cu in	25
FA102GC*	76883	Two-gang / 43.5 cu in		10
FA103GC*	76884	Three-gang / 65.0 cu in		10
FA104GC	76885	Four-gang / 87.0 cu in		10

Catalog Number	UPC/DEI/NAED Mfg. #018997	Description	Unit/Std Pkg
FA102D	04245	Low Voltage Divider for FA102, FA103, FA104	25



Optional FA102D low voltage separator for use with multiple gang IN/OUT BOX

Arlington's IN/OUT BOX is adjustable for wall thicknesses up to 1-1/2" – perfect for use when the final wall thickness is unknown; double drywall, change orders; tile, mirrors, etc.

New to the line...a single-gang horizontal box (**FA101H**) that's ideal for countertops - or anywhere you need a horizontal outlet.

We also offer the single-gang, low profile **FA101LP**. Designed for new work installations with shallower wall cavities, it's a little shorter than our 'regular' single-gang IN/OUT outlet box – just right for smaller spaces. See reverse for more information and comparison with the 'regular' box.

- No more set back boxes – IN/OUT BOX depth adjusts before OR after the wall finish is done
- Always accessible depth adjustment screw – even with wall finish in place
- Complies with 2014 NEC, 314.20 for set back boxes
- Secure installation – Mounts to wood or steel studs in new construction
- 2-Hour Fire Rating on single, two and three gang boxes
- UL Listed

Patent pending



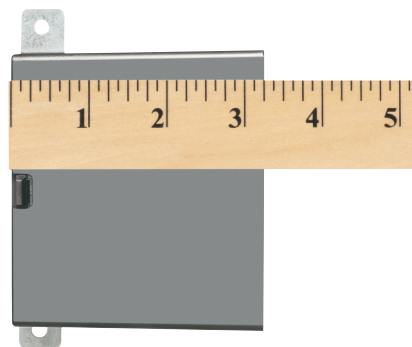
Arlington

1 Stauffer Industrial Park
Scranton, PA 18517
800/233.4717
Fax 570/562.0646
www.aifittings.com

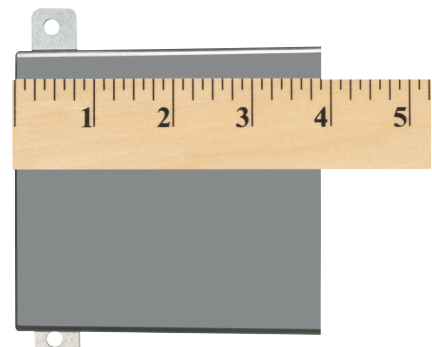
IN/OUT BOX™ Adjustable Plastic Outlet Box Made in USA

Low Profile for Shallow Wall Cavities in New Construction

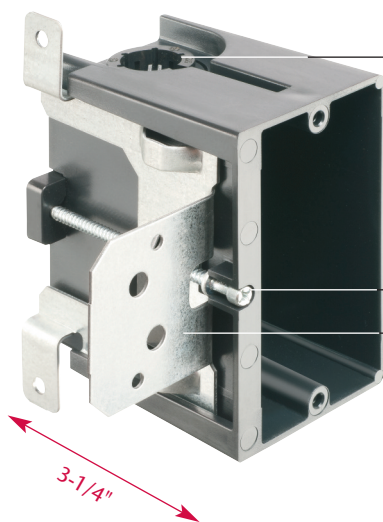
Our single-gang, low profile FA101LP is **shorter than our 'regular' single-gang FA101 outlet box** – just right for shallow wall cavities.



Shorter depth
FA101LP



for 2x4
FA101



NM cable connector

FA101LP
Single-gang
Shorter Depth
Adjustable Outlet Box



Always accessible depth adjustment screw

Heavy-duty mounting bracket



1 Stauffer Industrial Park
Scranton, PA 18517
800/233.4717
Fax 570/562.0646
www.aifittings.com

Patent pending
FA101 1014/15M

Catalog Number	UPC/DEI/NAED Mfg. #018997	Description IN/OUT BOX™	Size/ Cu Inches	Unit/Std Pkg
FA101LP	76880	3.25" deep, Non-metallic outlet box	Single-gang 18.3 cu in	25
FA101LPGC	76882	3.25" deep, Non-metallic outlet box, with ground clip for Canada	Single-gang 18.3 cu in	25

w/ depth adjustment up to 1-1/2" (pre-set for 1/2" wall thickness)