

More on reverse!

# Cover Unused Ceiling Boxes The **NEAT** Way!

## Covers Pan Boxes, Fan & Electrical Boxes

Here's the Neatest way to cover unused electrical boxes and poorly cut drywall!

Arlington's **CP3540** ceiling plate cover, now works with pan boxes, as well as most fan/fixture boxes — including our **FB405** and **FB407** pan boxes!

Its new bracket design allows it to be used on flat or uneven, textured ceilings.

### CP3540...

- ▶ Provides a clean installation...no screws show on ceiling plate
- ▶ Fits 3-1/2" or 4" round or octagonal boxes
- ▶ Non-metallic
- ▶ Textured, Paintable

CATALOG #	UPC/DCI/NAED MFG #01 8997	BOX SIZE	UNIT PKG	STD PKG
<b>CP3540</b>	54090	3-1/2" & 4"	1/Bag	50 Bags

Patented.  
Other patents pending.



## Arlington

1 Stauffer Industrial Park, Scranton, PA 18517  
800/233-4717 • FAX 570/562-0646  
www.aifittings.com



**CP3540**  
Box Cover

**NEW BRACKET DESIGN!**

Use Opening 'A' ..... for flat ceilings

Use Opening 'B' ..... for uneven or textured ceilings

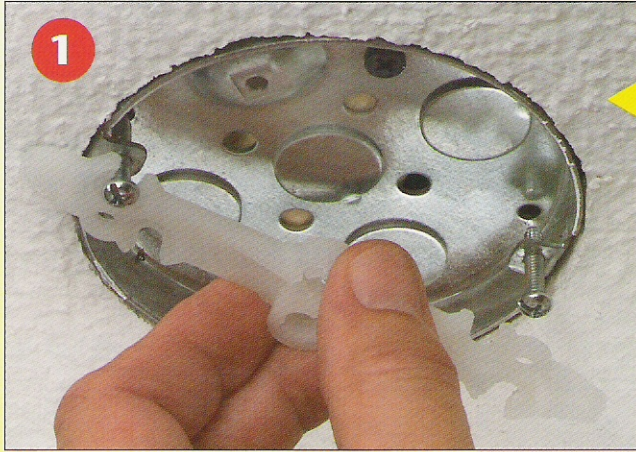


### Now for Flat & Uneven Ceilings!

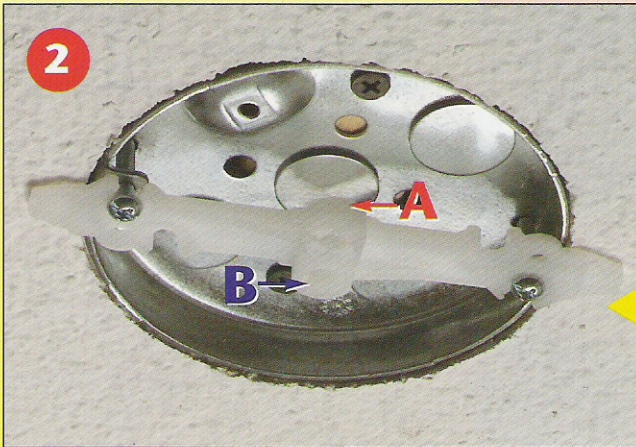
# CP3540 Box Cover

*Fast and Easy to Install!*

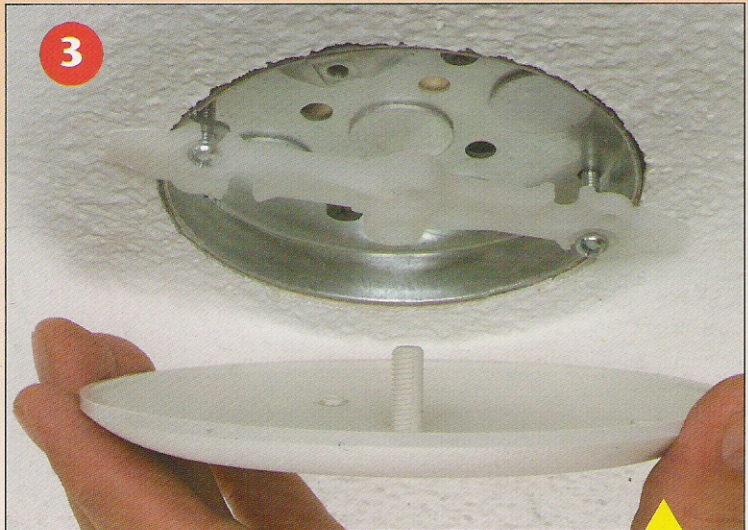
*Provides 'A' & 'B' bracket openings for use with any ceiling condition; and accommodates #8 and #10 screws!*



Just back the screws out enough to slip the bracket on.



Use the opening in the bracket that's most suitable for your ceiling condition...  
 'A' for flat ceilings;  
 'B' for uneven or textured ceilings.



On **flat ceilings**, push stud into opening to seat cover.

On **textured or uneven ceilings**, thread the stud into the opening until tight.



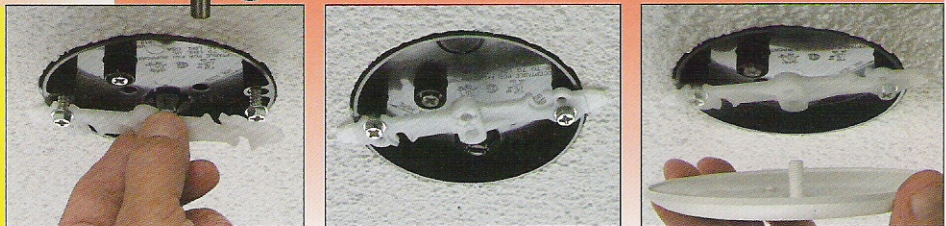
*Works with our FB405 & FB407 pan boxes too!*



Patents pending, FB405 & FB407.

**Arlington**

1 Stauffer Industrial Park  
 Scranton, PA 18517  
 800.233.4717  
 Fax 570.562.0646  
 www.aifittings.com



Distributed by