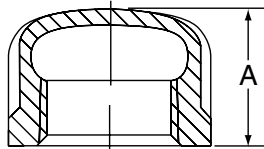


## Class 150 (Standard)

# FIG. 3124

## Cap



For Listings/Approval Details and Limitations, visit our website at [www.anvilintl.com](http://www.anvilintl.com) or contact an Anvil® Sales Representative.

### FIGURE 3124 - CAP

Nominal Size	Dimension A	Approx. Wt. Each
<i>In. (mm)</i>	<i>In. (mm)</i>	<i>Lbs. (kg)</i>
1/8▲ 6	0.53 13.46	0.03 0.01
1/4▲ 8	0.63 16.00	0.05 0.02
3/8▲ 10	0.74 18.80	0.07 0.03
1/2 15	0.87 22.10	0.11 0.05
3/4 20	0.97 24.64	0.18 0.08
1 25	1.16 29.46	0.30 0.14
1 1/4 32	1.28 32.51	0.44 0.20
1 1/2 40	1.33 33.78	0.55 0.25
2 50	1.45 36.83	0.85 0.39
2 1/2 65	1.70 43.18	1.49 0.68
3 80	1.80 45.72	2.20 1.00
3 1/2 90	1.90 48.26	3.02 1.37
4 100	2.08 52.83	3.79 1.72
6 150	2.55 64.77	8.77 3.98

▲ – Supplied in Steel only (Black and Galvanized).

### MATERIAL SPECIFICATIONS

Dimensions: Fittings: ASME B16.3  
 Unions: ASME B16.39  
 Bushings/Plugs: ASME B16.14

Material: ASTM A-197

Finish: Black or Hot Dip Galvanized per ASTM A153 Class A

Threads\*: NPT per ASME B1.20.1

Pressure Ratings: Fittings: ASME B16.3  
 Unions: ASME B16.39  
 Bushings/Plugs: ASME B16.14

Pressure Testing: All malleable iron fittings are tested for through wall porosity using an air under water process.

Agency Approvals: All malleable iron fittings and unions are UL/ULC Listed and FM Approved.

\* British Standard threading per BS 21 available upon request.

### PROJECT INFORMATION

### APPROVAL STAMP

Project:	<input type="checkbox"/> Approved
Address:	<input type="checkbox"/> Approved as noted
Contractor:	<input type="checkbox"/> Not approved
Engineer:	Remarks:
Submittal Date:	
Notes 1:	
Notes 2:	