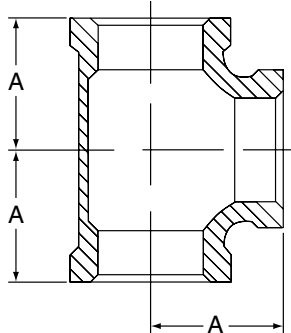


## Class 150 (Standard)

# FIG. 3105

## Straight Tee



For Listings/Approval Details and Limitations, visit our website at [www.anvilintl.com](http://www.anvilintl.com) or contact an Anvil® Sales Representative.

### FIGURE 3105 - STRAIGHT TEE

Nominal Size	Dimension A	Approx. Wt. Each
<i>In. (mm)</i>	<i>In. (mm)</i>	<i>Lbs. (kg)</i>
1/8 6	0.69 17.53	0.09 0.04
1/4 8	0.81 20.57	0.14 0.06
3/8 10	0.95 24.13	0.21 0.10
1/2 15	1.12 28.45	0.31 0.14
3/4 20	1.31 33.27	0.50 0.23
1 25	1.50 38.10	0.79 0.36
1 1/4 32	1.75 44.45	1.19 0.54
1 1/2 40	1.94 49.28	1.57 0.71
2 50	2.25 57.15	2.43 1.10
2 1/2 65	2.70 68.58	4.33 1.96
3 80	3.08 78.23	6.37 2.89
4 100	3.79 96.27	11.03 5.00
6 150	5.13 130.30	25.98 11.78

### MATERIAL SPECIFICATIONS

Dimensions: Fittings: ASME B16.3  
 Unions: ASME B16.39  
 Bushings/Plugs: ASME B16.14

Material: ASTM A-197

Finish: Black or Hot Dip Galvanized per ASTM A153 Class A

Threads\*: NPT per ASME B1.20.1

Pressure Ratings: Fittings: ASME B16.3  
 Unions: ASME B16.39  
 Bushings/Plugs: ASME B16.14

Pressure Testing: All malleable iron fittings are tested for through wall porosity using an air under water process.

Agency Approvals: All malleable iron fittings and unions are UL/ULC Listed and FM Approved.

\* British Standard threading per BS 21 available upon request.

### PROJECT INFORMATION

### APPROVAL STAMP

<b>Project:</b>	<input type="checkbox"/> Approved
<b>Address:</b>	<input type="checkbox"/> Approved as noted
<b>Contractor:</b>	<input type="checkbox"/> Not approved
<b>Engineer:</b>	<b>Remarks:</b>
<b>Submittal Date:</b>	
<b>Notes 1:</b>	
<b>Notes 2:</b>	