


SPF MALLEABLE IRON FITTINGS


Class 150 (Standard)

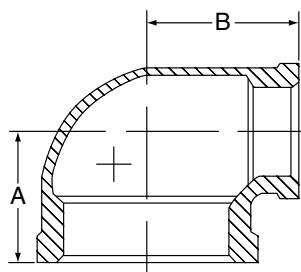
STANDARDS & SPECIFICATIONS

Import Malleable Iron Screwed Fittings (Class 150)

Dimensional:	Fittings:	ASME B16.3	
	Unions:	ASME B 16.39	
	Bushings/Plugs:	ASME B 16.14	
Material:	ASTM A-197		
Galvanizing:	ASTM A-153	(Hot Dip Galvanizing)	
Threading:*	ASME B 1.20.1		
Pressure Rating:	Fittings:	ASME B 16.3	
	Unions:	ASME B 16.39	
	Bushings/Plugs:	ASME B 16.14	
Pressure Testing:	All malleable iron fittings are tested for through wall porosity using an air under water process.		
Agency Approvals:	All malleable iron fittings and unions are UL Listed and FM Approved.		


*British Standard threading per BS 21 available upon request.

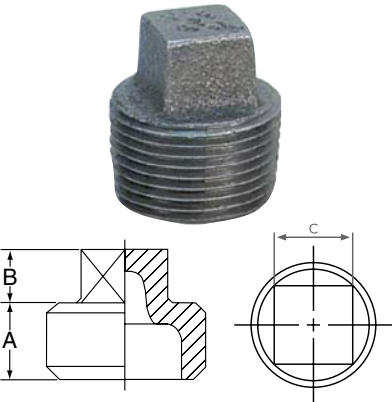
90° REDUCING ELBOW	Size	A	B	Weight
	in	in	in	lbs
	1/4 x 1/8	0.74	0.76	0.08
	3/8 x 1/8	0.81	0.85	0.11
	3/8 x 1/4	0.88	0.90	0.13
	1/2 x 1/4	0.97	0.98	0.16
	1/2 x 3/8	1.04	1.03	0.19
	3/4 x 3/8	1.12	1.13	0.26
	3/4 x 1/2	1.20	1.22	0.29
	1 x 3/8	1.18	1.26	0.35
	1 x 1/2	1.26	1.36	0.42
	1 x 3/4	1.37	1.45	0.47
	1 1/4 x 1/2	1.34	1.53	0.54
	1 1/4 x 3/4	1.45	1.62	0.62
	1 1/4 x 1	1.58	1.67	0.73
	1 1/2 x 1/2	1.38	1.65	0.65
	1 1/2 x 3/4	1.52	1.75	0.74
	1 1/2 x 1	1.65	1.80	0.88
	1 1/2 x 1 1/4	1.82	1.88	1.03
	2 x 1/2	1.50	1.89	0.93
	2 x 3/4	1.60	1.97	1.04
	2 x 1	1.73	2.02	1.28
	2 x 1 1/4	1.90	2.10	1.36
	2 x 1 1/2	2.02	2.16	1.51
	2 1/2 x 1 1/2	2.16	2.51	2.20
	2 1/2 x 2	2.39	2.60	2.55
	3 x 2	2.52	2.89	3.35
	3 x 2 1/2	2.83	2.99	4.12
	4 x 2	2.72	3.43	5.01
	4 x 3	3.30	3.60	6.65



SPF MALLEABLE IRON FITTINGS

Class 150 (Standard)

REDUCING COUPLINGS	Size	A	Weight
	<i>in</i>	<i>in</i>	<i>lbs</i>
	1/4 x 1/8	1.00	0.07
	3/8 x 1/8	1.13	0.09
	3/8 x 1/4	1.13	0.10
	1/2 x 1/8	1.25	0.13
	1/2 x 1/4	1.25	0.13
	1/2 x 3/8	1.25	0.14
	3/4 x 1/8	1.44	0.18
	3/4 x 1/4	1.44	0.20
	3/4 x 3/8	1.44	0.21
	3/4 x 1/2	1.44	0.22
	1 x 1/2	1.69	0.34
	1 x 3/4	1.69	0.36
	1 1/4 x 1/2	2.06	0.47
	1 1/4 x 3/4	2.06	0.51
	1 1/4 x 1	2.06	0.57
	1 1/2 x 1/2	2.31	0.62
	1 1/2 x 3/4	2.31	0.66
	1 1/2 x 1	2.31	0.73
	1 1/2 x 1 1/4	2.31	0.80
	2 x 1/2	2.81	0.94
	2 x 3/4	2.81	0.99
	2 x 1	2.81	1.03
	2 x 1 1/4	2.81	1.17
	2 x 1 1/2	2.81	1.25
	2 1/2 x 1 1/4	3.25	1.81
	2 1/2 x 1 1/2	3.25	1.90
	2 1/2 x 2	3.25	2.04
	3 x 1	3.69	2.48
	3 x 1 1/4	3.69	2.55
	3 x 1 1/2	3.69	2.67
3 x 2	3.69	2.78	
3 x 2 1/2	3.69	3.23	
4 x 2	4.38	4.43	
4 x 2 1/2	4.38	4.87	
4 x 3	4.38	5.29	

PLUGS		Size	A	B	C	Weight
		<i>in</i>	<i>in</i>	<i>in</i>	<i>in</i>	<i>lbs</i>
	Solid	1/4	0.44	0.28	0.38	0.04
	Solid	3/8	0.48	0.31	0.44	0.06
	Cored	1/2	0.56	0.38	0.56	0.08
	Cored	3/4	0.63	0.44	0.63	0.13
	Cored	1	0.75	0.50	0.81	0.20
	Cored	1 1/4	0.80	0.56	0.94	0.32
	Cored	1 1/2	0.83	0.62	1.13	0.43
	Cored	2	0.88	0.68	1.31	0.67
	Cored	2 1/2	1.07	0.74	1.50	1.11
	Cored	3	1.13	0.80	1.69	1.53
	Bar Plug	4	1.22	1.00	–	2.71
	Bar Plug	6	1.40	1.25	–	4.00