


SPF MALLEABLE IRON FITTINGS


Class 150 (Standard)

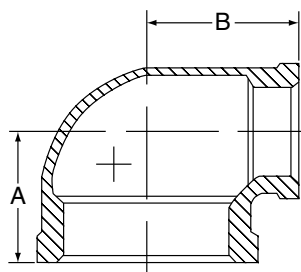
STANDARDS & SPECIFICATIONS

Import Malleable Iron Screwed Fittings (Class 150)

Dimensional:	Fittings:	ASME B16.3	
	Unions:	ASME B 16.39	
	Bushings/Plugs:	ASME B 16.14	
Material:	ASTM A-197		
Galvanizing:	ASTM A-153	(Hot Dip Galvanizing)	
Threading:*	ASME B 1.20.1		
Pressure Rating:	Fittings:	ASME B 16.3	
	Unions:	ASME B 16.39	
	Bushings/Plugs:	ASME B 16.14	
Pressure Testing:	All malleable iron fittings are tested for through wall porosity using an air under water process.		
Agency Approvals:	All malleable iron fittings and unions are UL Listed and FM Approved.		


*British Standard threading per BS 21 available upon request.

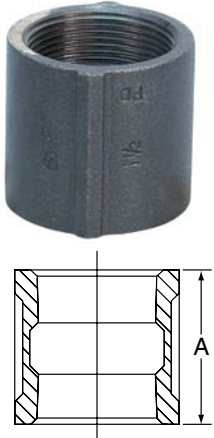
90° REDUCING ELBOW	Size	A	B	Weight
	in	in	in	lbs
	1/4 x 1/8	0.74	0.76	0.08
	3/8 x 1/8	0.81	0.85	0.11
	3/8 x 1/4	0.88	0.90	0.13
	1/2 x 1/4	0.97	0.98	0.16
	1/2 x 3/8	1.04	1.03	0.19
	3/4 x 3/8	1.12	1.13	0.26
	3/4 x 1/2	1.20	1.22	0.29
	1 x 3/8	1.18	1.26	0.35
	1 x 1/2	1.26	1.36	0.42
	1 x 3/4	1.37	1.45	0.47
	1 1/4 x 1/2	1.34	1.53	0.54
	1 1/4 x 3/4	1.45	1.62	0.62
	1 1/4 x 1	1.58	1.67	0.73
	1 1/2 x 1/2	1.38	1.65	0.65
	1 1/2 x 3/4	1.52	1.75	0.74
	1 1/2 x 1	1.65	1.80	0.88
	1 1/2 x 1 1/4	1.82	1.88	1.03
	2 x 1/2	1.50	1.89	0.93
	2 x 3/4	1.60	1.97	1.04
	2 x 1	1.73	2.02	1.28
	2 x 1 1/4	1.90	2.10	1.36
	2 x 1 1/2	2.02	2.16	1.51
	2 1/2 x 1 1/2	2.16	2.51	2.20
	2 1/2 x 2	2.39	2.60	2.55
	3 x 2	2.52	2.89	3.35
	3 x 2 1/2	2.83	2.99	4.12
	4 x 2	2.72	3.43	5.01
	4 x 3	3.30	3.60	6.65

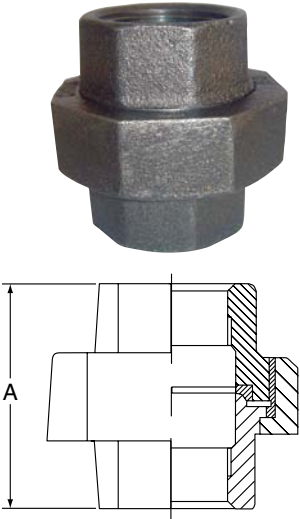


SPF MALLEABLE IRON FITTINGS

Class 150 (Standard)

FLOOR FLANGE	Size	Dia. Flange	Dia. of Bolt Circle	Dia. of Bolt Holes	Weight
	<i>in</i>	<i>in</i>	<i>in</i>	<i>in</i>	<i>lbs</i>
	¾	3.37	2.36	.28	0.49
	1	3.78	2.80	.28	0.63
	1 ¼	4.19	3.17	.28	0.87
	1 ½	4.59	3.50	.31	1.10
	2	5.18	4.01	.31	1.57

COUPLING	Size	A	Weight
	<i>in</i>	<i>in</i>	<i>lbs</i>
	⅛	0.96	0.05
	¼	1.06	0.08
	⅜	1.16	0.12
	½	1.34	0.17
	¾	1.52	0.27
	1	1.67	0.43
	1 ¼	1.93	0.65
	1 ½	2.15	0.86
	2	2.53	1.35
	2 ½	2.88	2.33
	3	3.18	3.36
	4	3.69	5.59

UNIONS (BRASS SEAT)	Size	A	Weight
	<i>in</i>	<i>in</i>	<i>lbs</i>
	⅛	1.26	0.16
	¼	1.46	0.23
	⅜	1.61	0.33
	½	1.73	0.41
	¾	1.95	0.60
	1	2.07	0.89
	1 ¼	2.26	1.25
	1 ½	2.42	1.76
	2	2.75	2.44
	2 ½	3.23	3.52
	3	3.50	4.34